



ZEN

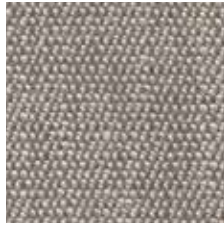
An understated two-tone fabric texture with a beautiful soft handle

INSTYLE

ZEN



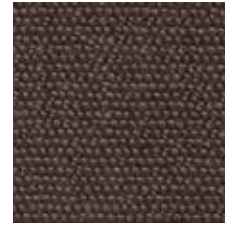
ZEN Quest



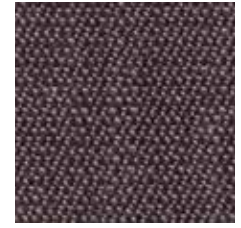
ZEN Tapestry



ZEN Bristle



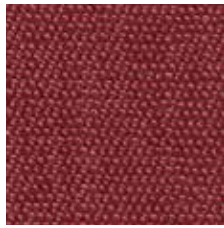
ZEN Raku



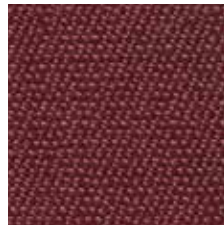
ZEN Chord



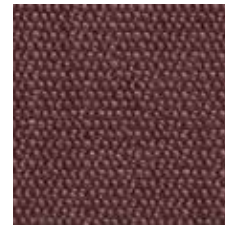
ZEN Incense



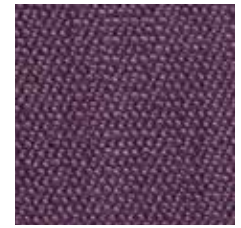
ZEN Rosetta



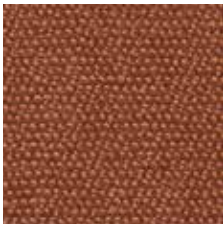
ZEN Act



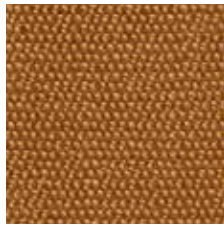
ZEN Kindle



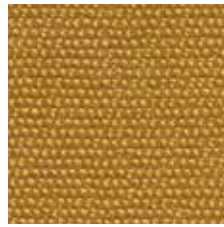
ZEN Orchid



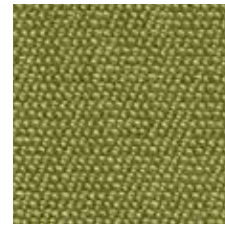
ZEN Henna



ZEN Perform



ZEN Stellar



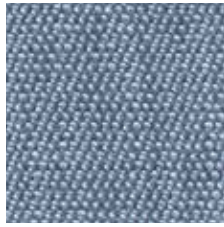
ZEN Jester



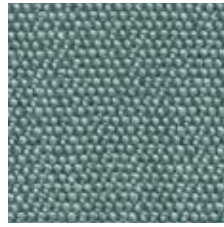
ZEN Greengrass



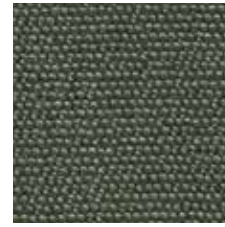
ZEN Uncharted



ZEN Distant



ZEN Coastal



ZEN Maze



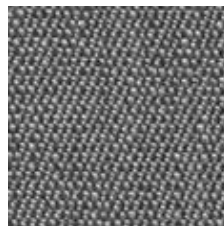
ZEN Hawkesbury



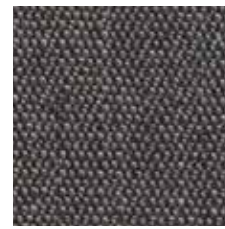
ZEN Lyrical



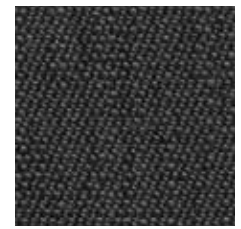
ZEN Experience



ZEN Windfall




ZEN Yonder



ZEN Forge

Product may vary in colour due to the nature of the media
Patterns shown are not to scale
Please refer to website for current colour range



COMPOSITION	90% polyester, 10% viscose
WIDTH	137cm
WEIGHT	650gsm
PATTERN REPEAT	nil
ROLL SIZE	30m approx.
CARE CODE	CTA 1
ABRASION Martindale AS2001.2.25	90,000
CTA RATING	 HEAVY DUTY COMMERCIAL USE
SEAM SLIPPAGE AS2001.2.22	Warp 3.3mm Weft 3.2mm Note: All seams must be overlocked or secured to prevent the premature failure of the seam due to fraying
PILLING Martindale IWS196	4/5
LIGHTFASTNESS ISO 105/B02	5
FIRE RATINGS AS/NZS 1530.3	Ignitability 10 Spread of Flame 0 Heat Evolved 3 Smoke Developed 5
AS/NZS 3837 (AS 5637.1)	BCA Group 2 Av. Specific Extinction Area 224.8m ² /kg
ISO 5660.1	NZBC Group 2S Av. Specific Extinction Area 169m ² /kg
APPLICATION	upholstery, screens, wall panels
PLEASE NOTE	Results from performance tests are guidelines only

GREEN STAR

ZEN can be used on white furniture certified to Ecospecifier, AFRDI, ECNZ and GECA

The Green Star Rating Tool states “Where at least 90% of an item’s mass is certified to a GBCA recognised standard, the item can be entered as a certified product at Level A, B or C.” Therefore any fabric can be used as fabrics are almost always under 10% by weight of a furniture item

WELL

ZEN can contribute to the following WELL criteria:

- Toxic Material Reduction: ZEN is free of PFCs, flame retardants, phthalates + urea formaldehyde