

FACE COMPOSITION	41% polyethylene, 26% polyester, 33% polyurethane
BACKING TYPE	acrylic
WIDTH	137 cm
WEIGHT	407gsm / 558g lineal m
PATTERN REPEAT	non-match
ROLL SIZE	36m approx. Note: minimum order quantity is 10.9m and 0.9m multiples
PERFORMANCE	Type II Wallcovering
FIRE RATING AS/NZS 3837	BCA Group 1 Av. Specific Extinction Area 838m2/kg
Additional Fire Tests	CA Bulletin 117 (Class 1), UFAC / NFPA-260 (Class 1), ASTM E-84 Tunnel Test (adhered+unadhered) Class A

ENVIRONMENT

- PVC-free, polyethylene based
- ORBIT is free of phthalates + heavy metals
- Low VOC

INSTALLATION INSTRUCTIONS

- Please refer to installation instructions for VIBE, a copy is supplied with each shipment and available from our website.
- All material must be installed in numerical sequence as cut from the roll.

CARE + MAINTENANCE

- Care must be taken not to damage or mark the surface due to abrasion / rubbing.
- General maintenance can be achieved with periodic dusting or vacuuming with a soft brush attachment.
- Remove ordinary dirt and smudges with a mild soap and warm water solution.
- Always test the solution on an inconspicuous portion of the wallcovering before proceeding, checking that there is no adverse effect on finish, colour or gloss.
- Care should be taken on dark colours due to the possibility of causing 'light marks'. Always use a blotting action rather than rubbing to avoid abrasion.
- Rinse thoroughly with clean water from the top down using a sponge.
- Dry with a soft lint free cloth or towel.
- Avoid alcohol / solvent based cleaners.
- VIBE care and maintenance instructions are available from our website or by contacting our office.

WARRANTY

- For a period of 3 years from date of invoice this wallcovering is guaranteed to be first quality and free of manufacturing defects. This warranty applies only to professionally applied installations according to the recommended installation instructions, and proper care and maintenance using appropriate cleaning agents as outlined in the care and

VIBE



Ivory EL-101



Eggshell EL-102



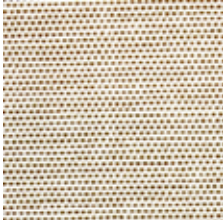
Dune EL-104



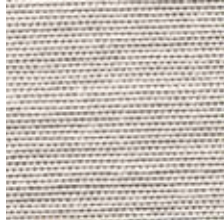
Straw EL-114



Blonde EL-111



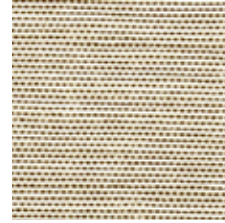
Pongee EL-108



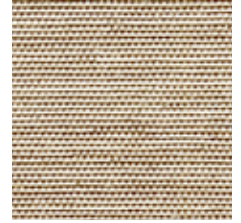
Feather EL-106



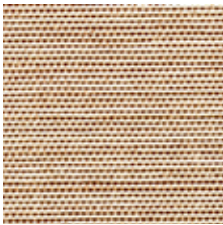
Taupe EL-107



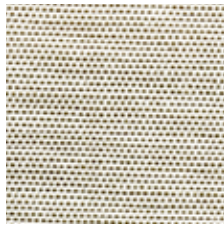
Cornsilk EL-109



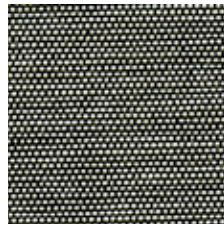
Vanilla EL-110



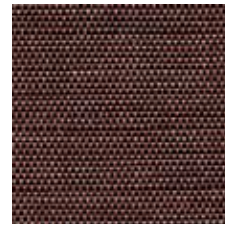
Cattail EL-113



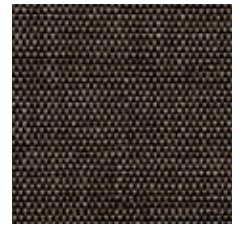
Thyme EL-120



Parsley EL-122



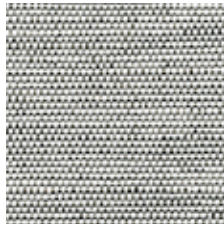
Rawhide EL-126



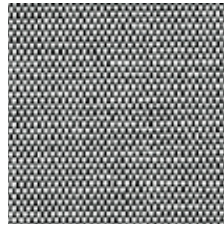
Abyss EL-128



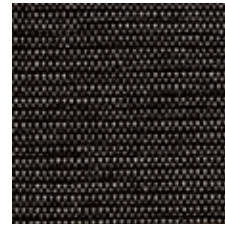
Sky EL-118



Pebble EL-119



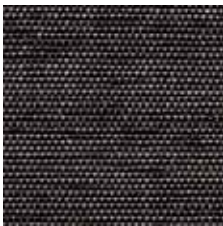
Ash EL-123



Onyx EL-125



Black EL-129



Charcoal EL-127

Patterns shown are not to scale
Product may vary in colour due to the nature of the media
Please refer to website for current colour range