

SRI LANKA

—
An elegant sisal textural
wallcovering with a rich
vivid colour palette



INSTYLE

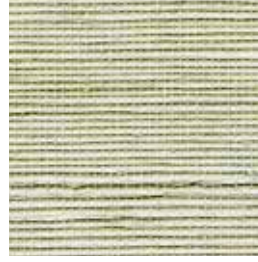
SRI LANKA



Fennel SRI-100



Silver Tips SRI-102



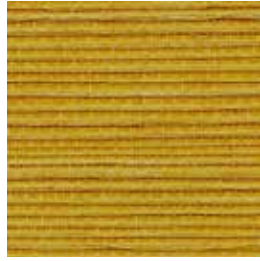
Cardamom SRI-118



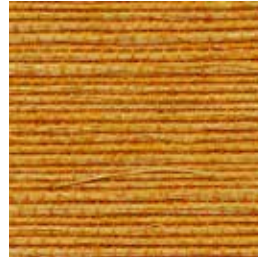
Pekoe SRI-109



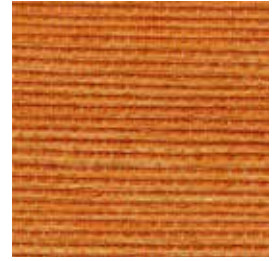
Starfruit SRI-104



Turmeric SRI-114



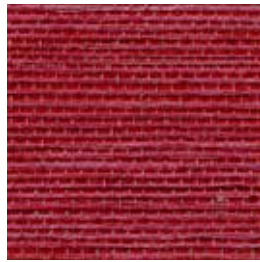
Papaya SRI-112



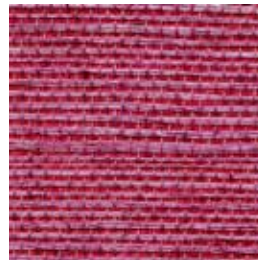
Saffron SRI-113



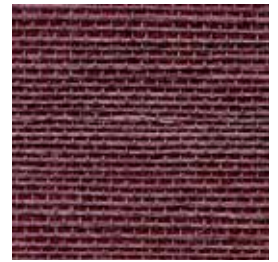
Ceylon SRI-103



Dragonfruit SRI-115



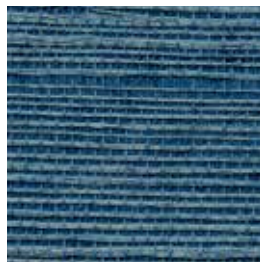
Hibiscus SRI-106



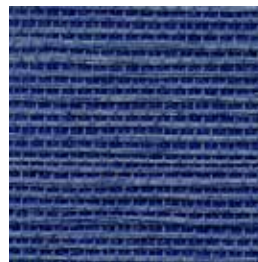
Mangosteen SRI-117



Blue Lotus SRI-116



Water Lily SRI-108



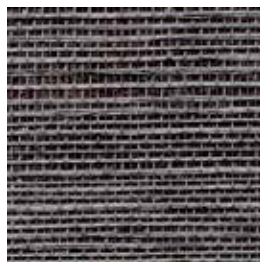
Lagoon SRI-110



Peppercorn SRI-105



Salt SRI-101

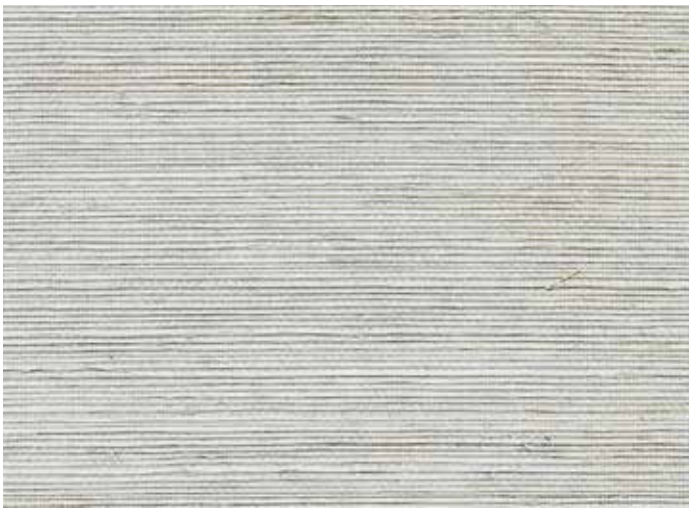


Assam SRI-107



Coffee SRI-111

Patterns shown are not to scale
Product may vary in colour due to the nature of the media
Please refer to website for current colour range



FACE COMPOSITION	sisal + cotton yarn
BACKING TYPE	paper
WIDTH	91cm
WEIGHT	195gsm / 177g lineal m
PATTERN REPEAT	non-match
ROLL SIZE	27.4m approx. Note: minimum order quantity is 10.9m and 0.9m multiples
PERFORMANCE	Untyped Wallcovering
FIRE RATING AS/NZS 3837	BCA Group 2 Av. Specific Extinction Area 54.2 m2/kg
Additional Fire Tests	ASTM E-84 Tunnel Test Class A
PLEASE NOTE	SRI LANKA may exhibit variations in colour and texture. This is integral to the beauty and character of the handcrafted organic material. Seams may be obvious upon installation and there will be a panelling effect.

ENVIRONMENT

- Sisal is a natural fibre derived from the Agave plant that is cultivated in managed forests. The inks are solvent free and are free of heavy metals.
- SRI LANKA is permeable and aids the reduction of mould and mildew. There are no chemical additives and the wallcovering is free of PVC, chlorine, heavy metals and urea formaldehyde. Only water based inks and coatings are used.

PRODUCT INSTALLATION

- Please refer to installation instructions for SRI LANKA supplied with each shipment. A copy is also available on our website.
- All material must be installed in numerical sequence as cut from the roll.

CARE + MAINTENANCE

- Due to the delicate nature of the finishes, care must be taken not to damage or mark the surface due to abrasion / rubbing.
- General maintenance can be achieved with periodic dusting or vacuuming with a soft brush attachment.
- Remove ordinary dirt and smudges with a mild soap and warm water solution.
- Always test the solution on an inconspicuous portion of the wallcovering before proceeding, checking that there is no adverse effect on finish, colour or gloss.
- Care should be taken on dark colours due to the possibility of causing 'light marks'. Always use a blotting action rather than rubbing to avoid abrasion.
- Rinse thoroughly with clean water from the top down using a sponge.
- Dry with a soft lint free cloth or towel.
- Avoid alcohol / solvent based cleaners.
- SRI LANKA care and maintenance instructions are available on our website.

WARRANTY

- For a period of 3 years from date of invoice this wallcovering is guaranteed to be first quality and free of manufacturing defects. This warranty applies only to professionally applied installations according to the recommended hanging instructions, and proper care and maintenance using appropriate cleaning agents as outlined in the care and maintenance instructions.