

# ODEON

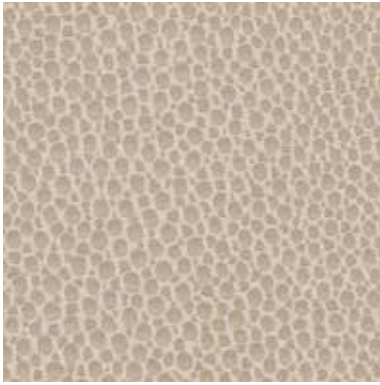
---

A delicate embossed  
shagreen texture that is  
luxurious and durable

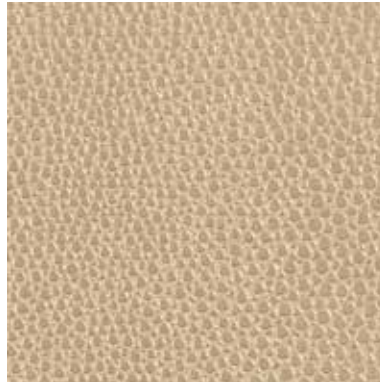
INSTYLE



# ODEON



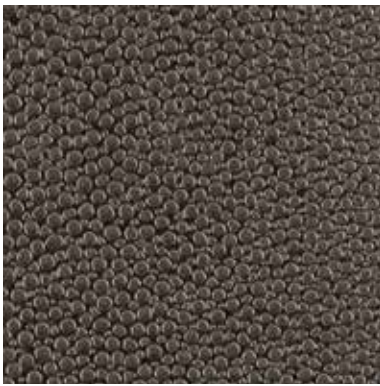
ODEON Saint-Cloud ODN-02



ODEON Cluny ODN-03



ODEON Saint-Germain ODN-04



ODEON Metro ODN-05



ODEON Carrefour ODN-01

Patterns shown are not to scale  
Product may vary in colour due to the nature of the media  
Please refer to website for current colour range



FACE COMPOSITION	engineered FR cotton
BACKING TYPE	woven cotton
WIDTH	137cm
ROLL SIZE	45.7m Note: minimum order quantity is 10.9m and multiples of 0.9m
WEIGHT	543gsm / 744g lineal m
PATTERN REPEAT	non-match
PERFORMANCE	Type II Wallcovering
FIRE RATING AS/NZS 3837	BCA Group 1 Av. Specific Extinction Area 122m2/kg
ASTM E-84 Tunnel Test	Class A

**PRODUCT INSTALLATION**

- Before cutting or installing this wallcovering, please refer to the detailed installation instructions for ODEON supplied with each shipment and available from our website.

**CARE + MAINTENANCE**

- General maintenance can be achieved with periodic dusting or vacuuming with a soft brush attachment.
- Remove ordinary dirt and smudges with a mild soap and warm water solution. Always test the solution on an inconspicuous portion of the wallcovering before proceeding, checking that there is no adverse effect on finish, colour or gloss. Care should be taken on dark colours due to the possibility of causing 'light marks'. Always use a blotting action rather than rubbing to avoid abrasion. Rinse thoroughly with clean water from the top down using a sponge.
- Deeply embossed wallcoverings need extra attention in case suds or loosened dirt lodge in depressed surfaces.
- Dry wallcovering with a soft lint free cloth or towel.
- ODEON care and maintenance instructions is available from our website.

**WARRANTY**

- For a period of 3 years from date of invoice this wallcovering is guaranteed to be first quality and free of manufacturing defects. This warranty applies only to professionally applied installations according to the recommended installation instructions, and proper care and maintenance using appropriate cleaning agents as outlined in the care and maintenance instructions.