

# KYOTO

---

A sophisticated wallcovering  
with an organic grass weave  
texture

INSTYLE

# KYOTO



Ginseng J503



Wasabi J504



Zen J505



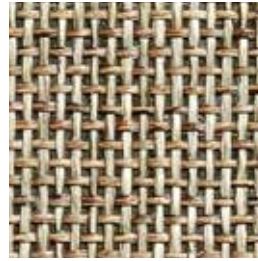
Sierra J500



Kumquat J502



Harvest J501



Shitake J506

Patterns shown are not to scale  
Product may vary in colour due to the nature of the media  
Please refer to website for current colour range



FACE COMPOSITION	paper yarn
BACKING TYPE	paper
WIDTH	91cm
WEIGHT	315gsm / 288g lineal m
PATTERN REPEAT	non-match
ROLL SIZE	10.8m approx. Note: minimum order quantity is 3.6m and 3.6m multiples
PERFORMANCE	Type I Wallcovering
FIRE RATING AS/NZS 3837	BCA Group 1 Av. Specific Extinction Area 10.6 m2/kg
ISO 5660.1	NZBC Group 1-S in accordance with C/VM2 Appendix A
Additional Fire Tests	ASTM E-84 Tunnel Test Class A
PLEASE NOTE	KYOTO may exhibit variations of colour and texture. This is integral to the beauty and character of the handcrafted organic material. Seams may be obvious upon installation and there will be a panelling effect.
ENVIRONMENT	100% rapidly-renewable content

**PRODUCT INSTALLATION**

- Please refer to installation instructions for KYOTO supplied with each shipment. A copy is also available on our website.
- All material must be installed in numerical sequence as cut from the roll.
- All surfaces must be properly prepared using a professional latex based primer. Oil based products should be avoided due to potential adhesion problems and moisture development.
- Apply an even coat of adhesive to the back of the wallcovering. When pasting several strips in advance booking is suggested. Smooth surface, remove bubbles and excess paste.

**CARE + MAINTENANCE**

- Due to the delicate nature of the finishes, care must be taken not to damage or mark the surface due to abrasion / rubbing.
- General maintenance can be achieved with periodic dusting or vacuuming with a soft brush attachment.
- Remove ordinary dirt and smudges with a mild soap and warm water solution.
- Always test the solution on an inconspicuous portion of the wallcovering before proceeding, checking that there is no adverse effect on finish, colour or gloss.
- Care should be taken on dark colours due to the possibility of causing 'light marks'. Always use a blotting action rather than rubbing to avoid abrasion.
- Rinse thoroughly with clean water from the top down using a sponge.
- Dry with a soft lint free cloth or towel.
- Avoid alcohol / solvent based cleaners.
- KYOTO care and maintenance instructions are available on our website.

**WARRANTY**

- For a period of 3 years from date of invoice this wallcovering is guaranteed to be first quality and free of manufacturing defects. This warranty applies only to professionally applied installations according to the recommended installation instructions, and proper care and maintenance using appropriate cleaning agents as outlined in the care and maintenance instructions.