

HUDSON

—
A sophisticated
wallcovering with a timber
veneer texture



HUDSON



White Oak HU101N



Birch HU09



Ash HU01



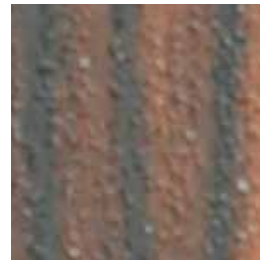
Pecan HU03



Eucalyptus HU102N



Cedar HU23



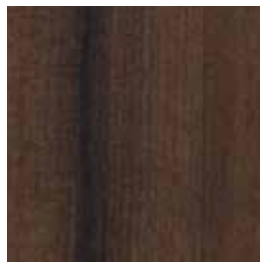
Mahogany HU31



Pine HU04



Smoke Oak HU02



Walnut HU21



Jatoba HU103N



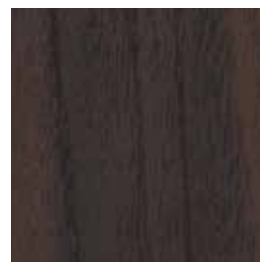
Wenge HU05



Teak HU32



Dark Cedar HU104N



Dark Teak HU105N



Burl HU86



Ironwood HU11



Black Walnut HU06



Ebony HU59

Patterns shown are not to scale
Product may vary in colour due to the nature of the media
Please refer to website for current colour range



FACE COMPOSITION	high density wood pulp, acrylic
BACKING TYPE	paper
WIDTH	91cm
WEIGHT	263gsm / 241g lineal m
PATTERN REPEAT	non-match
ROLL SIZE	49.5m approx. Note: minimum order quantity is 10.9m and 0.9m multiples
PERFORMANCE	Type I Wallcovering
FIRE RATING AS/NZS 3837	BCA Group 1 Av. Specific Extinction Area 44.6m ² /kg
Additional Fire Tests	ASTM E-84 Tunnel Test Class A Flame Spread 25, Smoke Developed 5
PLEASE NOTE	HUDSON may exhibit variations in colour and texture. This is natural characteristic of a handcrafted material and is not considered a defect. Seams may be obvious upon installation and there will be a panelling effect.

PRODUCT INSTALLATION

- Please refer to installation instructions for HUDSON supplied with each shipment. A copy is also available on our website.
- All material must be installed in numerical sequence as cut from the roll.

CARE + MAINTENANCE

- Due to the delicate nature of the finishes, care must be taken not to damage or mark the surface due to abrasion / rubbing.
- General maintenance can be achieved with periodic dusting or vacuuming with a soft brush attachment.
- Remove ordinary dirt and smudges with a mild soap and warm water solution.
- Always test the solution on an inconspicuous portion of the wallcovering before proceeding, checking that there is no adverse effect on finish, colour or gloss.
- Care should be taken on dark colours due to the possibility of causing 'light marks'. Always use a blotting action rather than rubbing to avoid abrasion.
- Rinse thoroughly with clean water from the top down using a sponge.
- Dry with a soft lint free cloth or towel.
- Avoid alcohol / solvent based cleaners.
- Please refer to the HUDSON care instructions for further details. A copy is available on our website.

WARRANTY

- For a period of 3 years from date of invoice this wallcovering is guaranteed to be first quality and free of manufacturing defects. This warranty applies only to professionally applied installations according to the recommended hanging instructions, and proper care and maintenance using appropriate cleaning agents as outlined in the care and maintenance instructions.