

# SLEEK

—

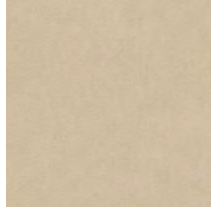
A sophisticated vinyl with a smooth surface and subtle gloss finish

INSTYLE

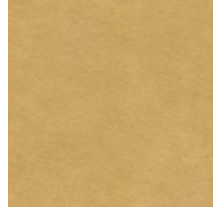
# SLEEK



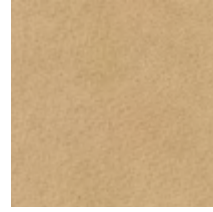
SLEEK Surface



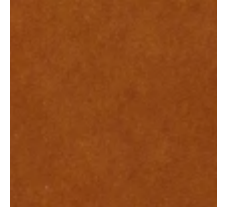
SLEEK Styling



SLEEK Angle



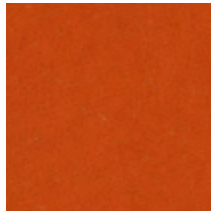
SLEEK Coat



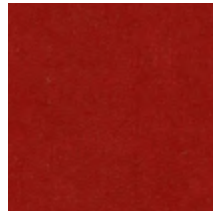
SLEEK Glossy



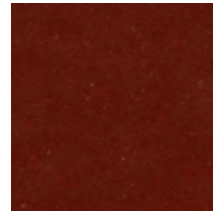
SLEEK Moves



SLEEK Attitude



SLEEK Dress



SLEEK Form



SLEEK Contour



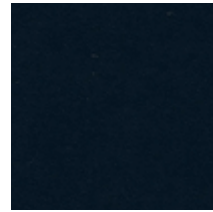
SLEEK Dancer



SLEEK Design



SLEEK Technology



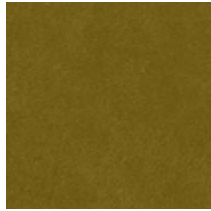
SLEEK Silhouette



SLEEK Feline



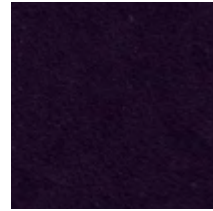
SLEEK Finish



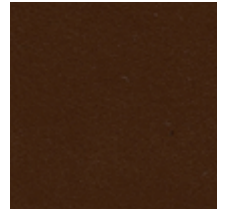
SLEEK Image



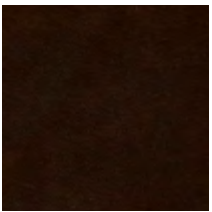
SLEEK Presentation



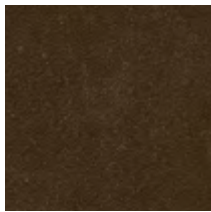
SLEEK Sounds



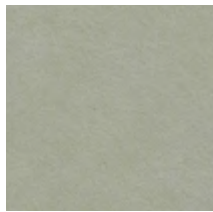
SLEEK Dude



SLEEK Suit



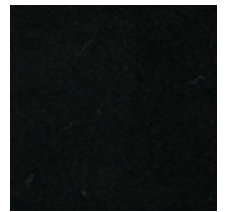
SLEEK Seal



SLEEK Performance



SLEEK Auto



SLEEK Machine

Product may vary in colour due to the nature of the media  
Please refer to website for current colour range



<b>COMPOSITION</b>	86% PVC, 14% polyester + Resilience		<b>PERFORMANCE</b>
<b>WIDTH / ROLL SIZE</b>	137cm / 27.4m approx.		<ul style="list-style-type: none"> <li>• <b>Permanent Stain Protection:</b> The Resilience finish guards against most stains. Most stains can simply be wiped away using mild soap and water.</li> <li>• <b>Waterproof + Water Resistant</b></li> <li>• <b>Easy to Clean + Bleach Cleanable:</b> Easily cleaned with mild soap and water. Can be easily disinfected using one part bleach and ten parts water</li> <li>• <b>Abrasion Resistance:</b> Resilience provides additional wear properties and surface durability, thereby increasing the life of the material. SLEEK is able to withstand wear and tear in high demanding situations</li> <li>• <b>Superior Lightfastness:</b> Achieves 500 hours light fastness</li> </ul>
<b>WEIGHT</b>	701gsm		
<b>PATTERN REPEAT</b>	nil		
<b>CARE CODE</b>	V1		
<b>ABRASION</b>			
Martindale AS2001.2.25	>100,000		
Wyzenbeek ASTM 4157	>500,000		
<b>LIGHTFASTNESS</b>	>6		
ISO 105-B02			
<b>TEARING FORCE</b>	Length 47N Width 36.4N		
AS2001.2.10			<b>ENVIRONMENT</b>
<b>UV RESISTANCE</b>	500 hours		<ul style="list-style-type: none"> <li>• Free of phthalates, flame retardant + anti-bacterial additives (ADF); lead, BPA, TRIS + formaldehyde</li> <li>• Does not contain conflict minerals</li> <li>• Reduced energy and water use, recycling of waste + solution-dyed product</li> <li>• Meets the environmental, health and safety standards set by California Prop 65, CPSIA + REACH</li> </ul>
AATCC 16-2004, Option 3			
<b>ADDITIONAL RESULTS</b>	Blocking Resistance AS4878.11 Resistance to Flex Cracking AS4878.9 Rubfastness ISO 105-X12 Breaking Force AS2001.2.3.2 Elongation + Stretch Set AS1441.9 Loss of Plasticiser AS1441.8		
<b>FIRE RATINGS</b>			
AS/NZS 1530.3	Ignitability	16	<ul style="list-style-type: none"> <li>• SLEEK can be used on white furniture certified to Ecospecifier, AFRDI, ECNZ and GECA</li> <li>• The Green Star Rating Tool states “Where at least 90% of an item’s mass is certified to a GBCA recognised standard, the item can be entered as a certified product at Level A, B or C.” Therefore any fabric can be used as fabrics are almost always under 10% by weight of a furniture item</li> </ul>
	Spread of Flame	0	
	Heat Evolved	1	
	Smoke Developed	5	
<b>Additional Fire Tests</b>	FMVSS, NFPA 260 California Bulletin 117 E		
<b>APPLICATION</b>	Indoor upholstery, banquette seating, bedheads, screens for healthcare, hospitality, office, public building, education, automotive + residential		<b>GREEN STAR</b>
<b>PLEASE NOTE</b>	Results from performance tests are guidelines only		<ul style="list-style-type: none"> <li>• SLEEK can contribute to WELL Toxic Material Reduction criterion as it is free of PFCs, flame retardants, phthalates and urea formaldehyde</li> </ul>
			<b>WELL</b>