



# LUXE

---

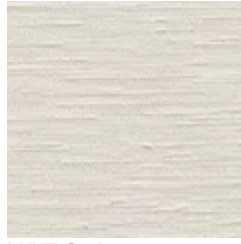
A high performance vinyl  
with a sophisticated silk-look  
aesthetic

INSTYLE

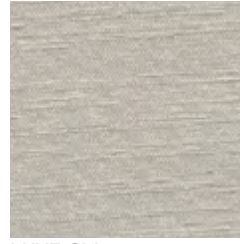
# LUXE



LUXE Titanium



LUXE Sorbet



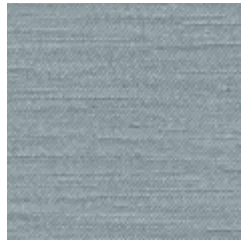
LUXE Chino



LUXE Earthenware



LUXE Dover



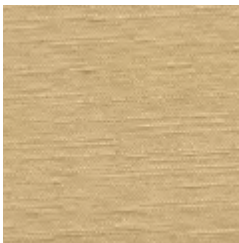
LUXE Aquashell



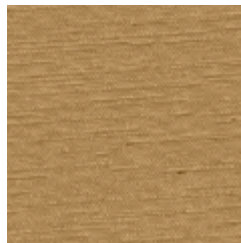
LUXE Platinum



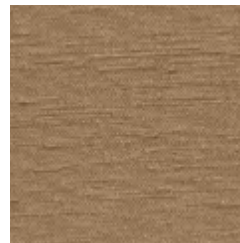
LUXE Pumice



LUXE Rye



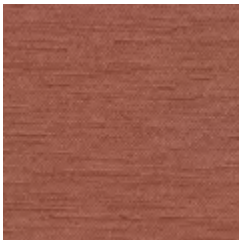
LUXE Golden



LUXE Wild Honey



LUXE Bronze



LUXE Red Earth



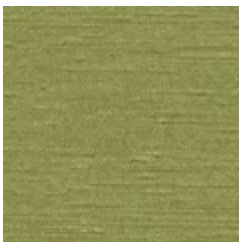
LUXE Vermillion



LUXE Ember



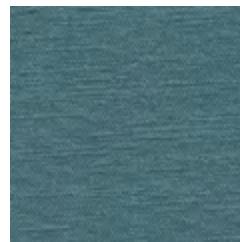
LUXE Imperial



LUXE Fern



LUXE Leaf



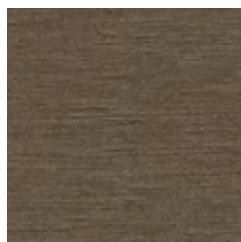
LUXE Jade



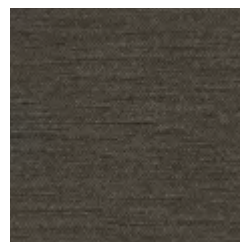
LUXE Seaspray



LUXE Bluestone



LUXE Mocha



LUXE Iron



LUXE Imperial

Product may vary in colour due to the nature of the media  
Please refer to website for current colour range



COMPOSITION	85% PVC, 15% polyester + Resilience	
WIDTH	137cm	
WEIGHT	725gsm	
PATTERN REPEAT	nil	
ROLL SIZE	27.4m approx.	
CARE CODE	V1	
ABRASION		
Martindale AS2001.2.25	150,000	
Wyzenbeek ASTM 4157	250,000 double rubs	
LIGHTFASTNESS	6	
ISO 105-B02		
FIRE RATINGS		
AS/NZS 1530.3	Ignitability	16
	Spread of Flame	0
	Heat Evolved	1
	Smoke Developed	5
APPLICATION	Indoor upholstery, banquette seating, bedheads, screens for healthcare, hospitality, workplace, public building, education, automotive + residential	
PLEASE NOTE	Results from performance tests are guidelines only	

**PERFORMANCE**

- **Permanent Stain Protection**
- **Waterproof and Water Resistant**
- **Easy to Clean + Bleach Cleanable:** Easily cleaned with mild soap and water. Can be easily disinfected using one part bleach and ten parts water
- **Abrasion Resistance:** Resilience provides additional wear properties and surface durability, thereby increasing the life of the material
- **Superior Lightfastness:** Achieves > 500 hours light fastness.
- **Excellent Strength:** Knitted fabric backing provides excellent tear and seam strength, with excellent stretch and tailoring properties

**ENVIRONMENT**

- Free of phthalates, flame retardant + anti-bacterial additives (ADF); lead, BPA, TRIS + formaldehyde
- Does not contain conflict minerals
- Reduced energy and water use, recycling of waste + solution-dyed product
- Manufacturer has an Environmental Management System (ISO 14001)
- Meets the environmental, health and safety standards set by California Prop 65, CPSIA + REACH

**GREEN STAR**

- LUXE can be used on white furniture certified to Ecospecifier, AFRDI, ECNZ and GECA
- The Green Star Rating Tool states “Where at least 90% of an item’s mass is certified to a GBCA recognised standard, the item can be entered as a certified product at Level A, B or C.” Therefore any fabric can be used as fabrics are almost always under 10% by weight of a furniture item

**WELL**

- LUXE can contribute to WELL Toxic Material Reduction criterion as it is free of PFCs, flame retardants, phthalates and urea formaldehyde