



HATCH

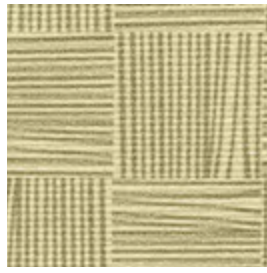
A unique indoor high performance vinyl

INSTYLE

HATCH



HATCH Dream



HATCH Create



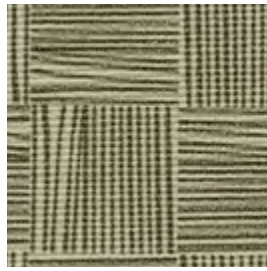
HATCH Back



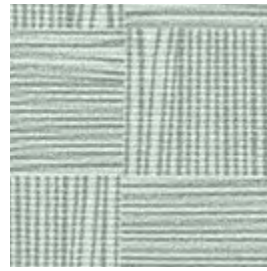
HATCH Lines



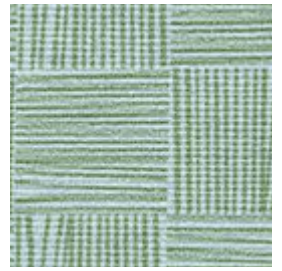
HATCH Effect



HATCH Scheme



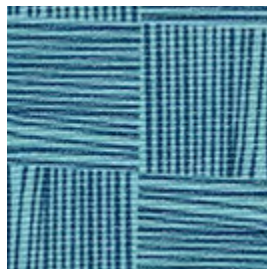
HATCH Formula



HATCH Motivate



HATCH Generate



HATCH Thought



HATCH Invention

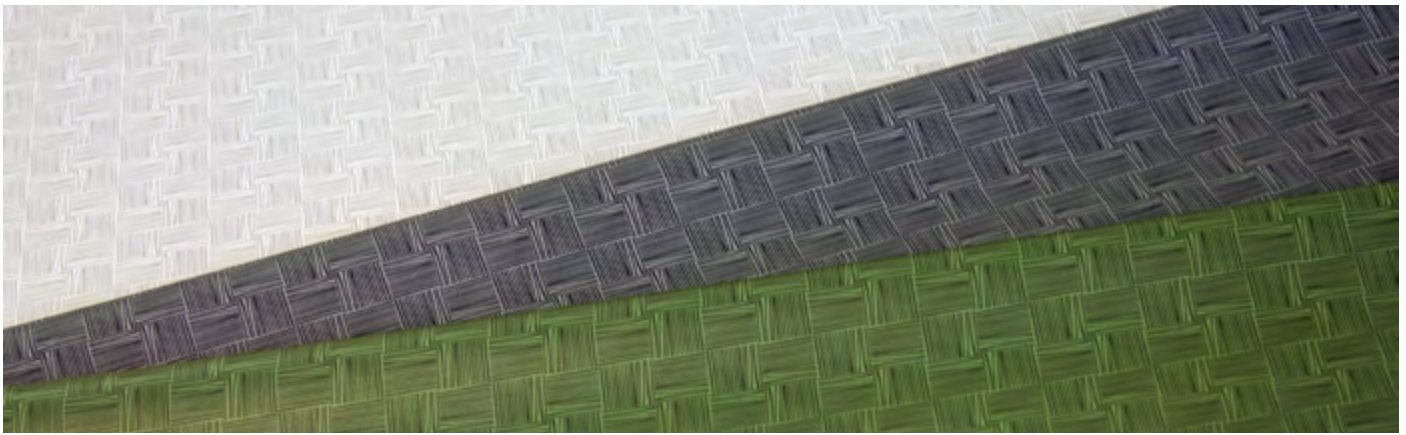


HATCH Result



HATCH Plan

Product may vary in colour due to the nature of the media
Patterns shown are not to scale
Please refer to website for current colour range



COMPOSITION	85% PVC, 15% polyester + Resilience	
WIDTH / ROLL SIZE	137cm / 27.4m approx	
WEIGHT	639gsm	
PATTERN REPEAT	H 3.8cm V 3.8cm	
CARE CODE	V1	
ABRASION		
Martindale AS2001.2.25	>100,000	
Wyzenbeek ASTM 4157	>350,000	
LIGHTFASTNESS	>6	
ISO 105-B02		
TEARING FORCE	Length 87.5N Width 44N	
AS2001.2.10		
UV RESISTANCE	>500 hours	
AATCC 16-2004, Option 3		
ADDITIONAL RESULTS	Blocking Resistance AS4878.11 Resistance to Flex Cracking AS4878.9 Tensile Strength AS4878.6 Elongation + Stretch Set AS1441.9 Loss of Plasticiser AS1441.8	
FIRE RATINGS		
AS/NZS 1530.3	Ignitability	16
	Spread of Flame	0
	Heat Evolved	1
	Smoke Developed	5
Additional Fire Tests	MVSS 302, NFPA 260 California Bulletin 117 E	
APPLICATION	Indoor upholstery, banquette seating, bedheads, screens for healthcare, hospitality, office, public building, education, automotive + residential	
PLEASE NOTE	Results from performance tests are guidelines only	

PERFORMANCE

- **Permanent Stain Protection:** The Resilience finish guards against most stains. Most stains can simply be wiped away using mild soap and water
- **Waterproof + Water Resistant**
- **Abrasion Resistance:** Resilience provides additional wear properties and surface durability, thereby increasing the life of the material. HATCH is able to withstand wear and tear in high demanding situations
- **Easy to Clean + Bleach Cleanable:** Easily cleaned with mild soap and water. Can be easily disinfected using one part bleach and ten parts water
- **Superior Lightfastness:** Achieves 500 hours light fastness

ENVIRONMENT

- Free of phthalates, flame retardant + anti-bacterial additives (ADF); lead, BPA, TRIS + formaldehyde
- Does not contain conflict minerals
- Reduced energy and water use, recycling of waste + solution-dyed product
- Meets the environmental, health and safety standards set by California Prop 65, CPSIA + REACH

GREEN STAR

- HATCH can be used on white furniture certified to Ecospecifier, AFRDI, ECNZ and GECA
- The Green Star Rating Tool states “Where at least 90% of an item’s mass is certified to a GBCA recognised standard, the item can be entered as a certified product at Level A, B or C.” Therefore any fabric can be used as fabrics are almost always under 10% by weight of a furniture item

WELL

- HATCH can contribute to WELL Toxic Material Reduction criterion as it is free of PFCs, flame retardants, phthalates and urea formaldehyde