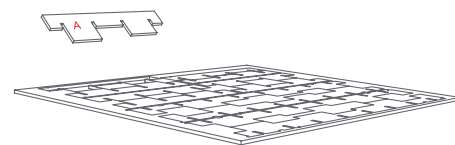
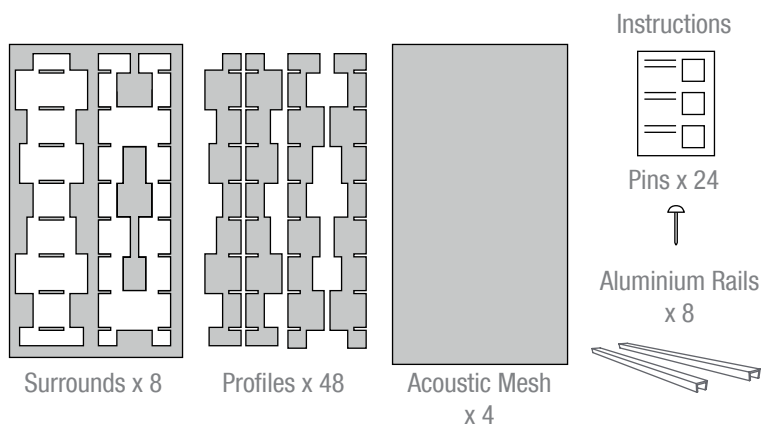
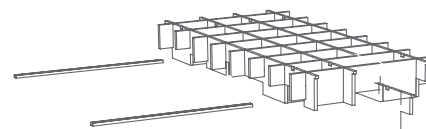
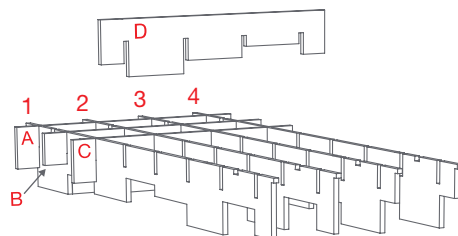
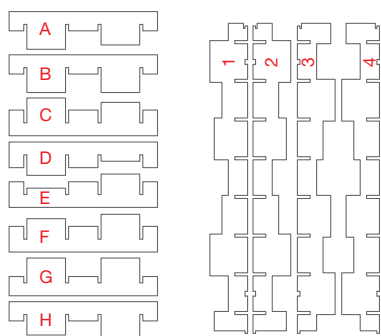


SCULPT™ ICON INSTALLATION

Supplied



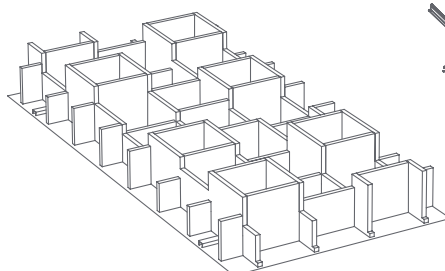
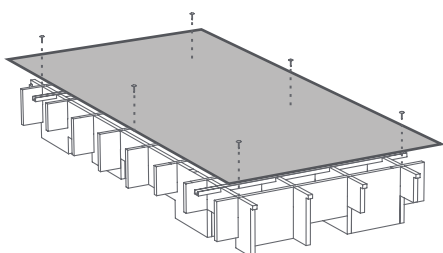
Step 1
Remove profiles from their protective surround.



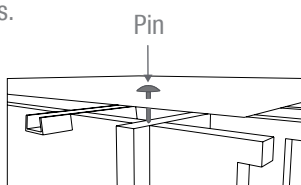
Step 2
Arrange profiles in sequence using the numbers + letters applied to each profile before pushing the 8 shorter profiles into the 4 longer profiles.
Start with profile A and profile 1 on the same corner.

Step 3
Reference numbers + letters 1, 3, B, E + H will be displayed on reverse face of the assembled profile, compared with other profiles.

Step 4
Slide the two aluminium rails through the four longer profiles using the slots provided. Remove labels.



Step 5
Attach the acoustic mesh to the back of the tile using the pins provided. Note: Pins should be placed close to midpoints and corners.



The assembled ceiling tile is complete.

Ceiling Grid Installation
Tile edge notch and tab profiles are designed to capture either 15mm or 24mm ceiling grid profiles. Tiles can be fitted and removed from ceiling grids quickly to access services above.

ECOUSTIC SCULPT™ CARE

Regular Care

- Protect from direct heat and sunlight
- To prevent dust build up, lightly dust with a soft cloth or vacuum with a soft brush attachment

Cleaning

- Professional cleaning is always recommended
- Always test any any cleaning products on an inconspicuous area prior to commencing cleaning
- Blot any excess spills from the material with a dry clean sponge or cloth
- Treat all stains and spills as soon as possible
- Most marks can be spot cleaned by lightly wetting the affected area with a mild detergent and warm water solution
- Do not saturate the tile
- Do not scrub or abrade the surface as this will affect the surface finish
- Once the stain or mark has been loosened then blot the excess solution out with a dry clean sponge or cloth
- Sponge afterwards with clean warm water and dry any excess moisture with a dry clean sponge or cloth
- The product can also be spot cleaned with dry cleaning fluid, lightly sponge a small amount of dry cleaning fluid and blot
- Dry away from direct heat and sunlight
- Do not use carpet shampoo

PACKED BY

Flat Surrounds	8
Acoustic Mesh	4
Aluminium Rails	8
Pins	24