

# MINKA

---

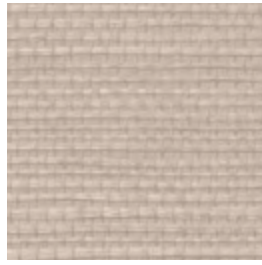
An understated elegant  
natural wallcovering  
made from sisal

INSTYLE

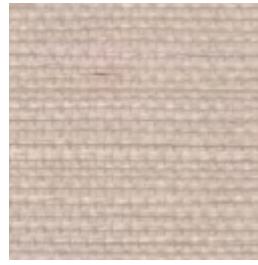
# MINKA



Shoji MIN-01



Fusuma MIN-02



Igusa MIN-03



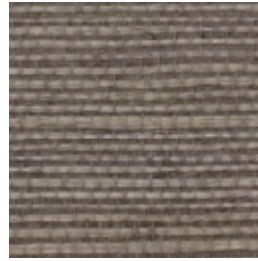
Mugiwara MIN-09



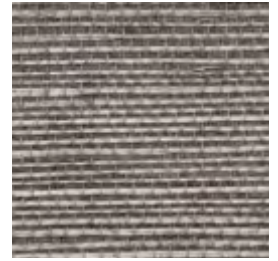
Wagoya MIN-05



Thatch MIN-07



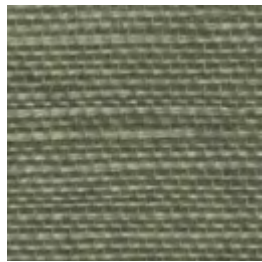
Udatsu MIN-10



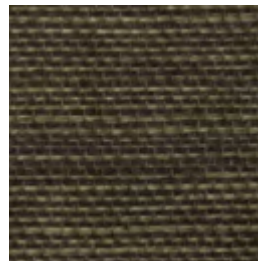
Smoke MIN-11



Wakaba MIN-06



Bamboo MIN-14



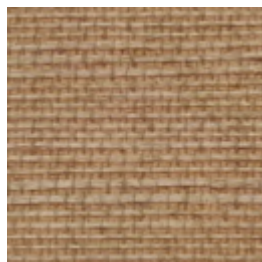
Earthen MIN-17



Doma MIN-18



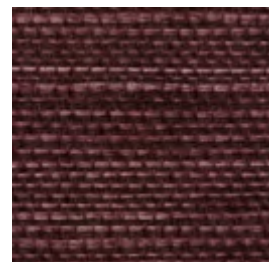
Sakura MIN-04



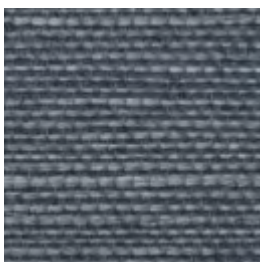
Miscanthus MIN-08



Shachi MIN-15



Mulberry MIN-16



Sanka MIN-12



Gyoka MIN-13

Product may vary in colour due to the nature of the media  
Please refer to website for current colour range



FACE COMPOSITION	100% sisal
BACKING TYPE	paper
WIDTH	91cm
WEIGHT	195gsm / 177g lineal m
PATTERN REPEAT	non-match
ROLL SIZE	27.4m approx. Note: minimum order quantity is 10.9m and 0.9m multiples
PERFORMANCE	Untyped Wallcovering
FIRE RATING AS/NZS 3837	BCA Group 2 Av. Specific Extinction Area 51.3m <sup>2</sup> /kg
ISO 5660.1	NZBC Group 2 Av. Specific Extinction Area 45m <sup>2</sup> /kg
Additional Fire Tests	ASTM E-84 Tunnel Test Class A
PLEASE NOTE	MINKA may exhibit variations in colour and texture. This is integral to the beauty and character of the handcrafted organic material. Seams may be obvious upon installation and there will be a panelling effect.

#### ENVIRONMENT

- Sisal is a natural fibre derived from the Agave plant that is cultivated in managed forests.
- The inks are solvent free and do not contain heavy metals.



#### PRODUCT INSTALLATION

- Please refer to installation instructions for MINKA supplied with each shipment. A copy is available on our website or obtained by contacting your nearest office or agent.
- All material must be installed in numerical sequence as cut from the roll.

#### CARE + MAINTENANCE

- Due to the delicate nature of the finishes, care must be taken not to damage or mark the surface due to abrasion / rubbing.
- General maintenance can be achieved with periodic dusting or vacuuming with a soft brush attachment.
- Remove ordinary dirt and smudges with a mild soap and warm water solution.
- Always test the solution on an inconspicuous portion of the wallcovering before proceeding, checking that there is no adverse effect on finish, colour or gloss.
- Care should be taken on dark colours due to the possibility of causing 'light marks'. Always use a blotting action rather than rubbing to avoid abrasion.
- Rinse thoroughly with clean water from the top down using a sponge.
- Dry with a soft lint free cloth or towel.
- Avoid alcohol / solvent based cleaners.
- MINKA care and maintenance instructions are available on our website or obtained by contacting your nearest office or agent.

#### WARRANTY

- For a period of 3 years from date of invoice this wallcovering is guaranteed to be first quality and free of manufacturing defects. This warranty applies only to professionally applied installations according to the recommended installation instructions, and proper care and maintenance using appropriate cleaning agents as outlined in the care and maintenance instructions.