



LINK

—
A contemporary upholstery
textile pattern inspired by
connectivity

INSTYLE

LINK



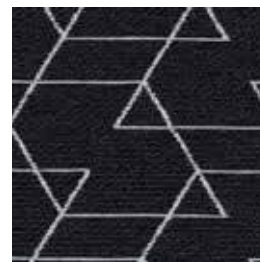
LINK Perfect



LINK Hidden



LINK Network



LINK Fixed



LINK Incidental



LINK Virtual



LINK Unite



LINK Channel



LINK Swift



LINK Direct



LINK Traverse



LINK Alliance

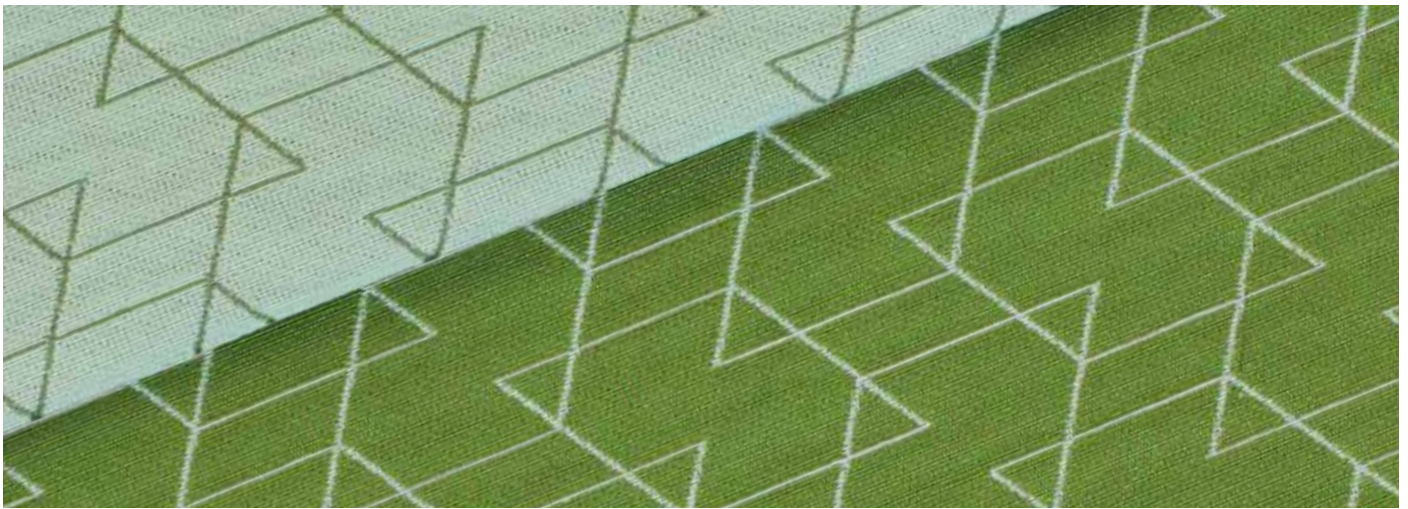


LINK Express



LINK Move

Product may vary in colour due to the nature of the media
Patterns shown are not to scale
Please refer to website for current colour range



COMPOSITION	57% cotton, 43% polyester	
WIDTH / WEIGHT	137cm / 341gsm	
PATTERN REPEAT	H 6cm V 3.8cm	
ROLL SIZE	50m approx.	
CARE CODE	CTA 1	
ABRASION Martindale AS 2001.2.25	50,000	
CTA RATING	hc	HEAVY DUTY COMMERCIAL USE
SEAM SLIPPAGE AS2001.2.22	Warp 1.5mm Weft 1.5mm Note: All seams must be overlocked or secured to prevent the premature failure of the seam due to fraying	
PILLING Martindale IWS196	4/5	
LIGHTFASTNESS ISO 105/B02	5	
FIRE RATINGS AS/NZS 1530.3	Ignitability	11
	Spread of Flame	0
	Heat Evolved	2
	Smoke Developed	4
AS/NZS 3837 (AS 5637.1)	BCA Group 1 Av. Specific Extinction Area 51.2m2/kg	
ISO 5660.1	NZBC Group 1 Av. Specific Extinction Area 40.1m2/kg in accordance with C/VM2 appendix A	
APPLICATION	upholstery, screen, wall panel	
ORIGIN	Made in Australia	

ENVIRONMENT

- 57% natural, rapidly-renewable content (cotton).
- 43% third-party certified polyester yarn: meets human ecological requirements according to Oeko-Tex Standard 100 Class I.
- Manufacturer has reduced water + energy use, reuse + recycling of waste

GREEN STAR

- LINK can be used on white furniture certified to Ecospecifier, AFRDI, ECNZ and GECA.
- The Green Star Rating Tool states “Where at least 90% of an item’s mass is certified to a GBCA recognised standard, the item can be entered as a certified product at Level A, B or C.” Therefore any fabric can be used as fabrics are almost always under 10% by weight of a furniture item.

LEED

- 57% rapidly renewable content contributes to LEED MR Credit 6 Rapidly Renewable Materials.

WELL

LINK can contribute to the following WELL criteria:

- Toxic Material Reduction: LINK is free of PFCs, flame retardants, phthalates and urea formaldehyde