

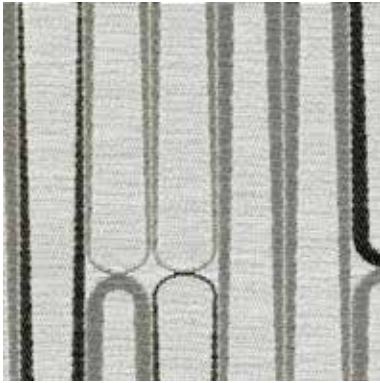
# VOX

A contemporary and dynamic large-scale pattern by Michael Young.

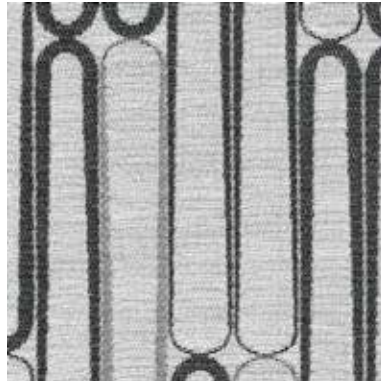


INSTYLE

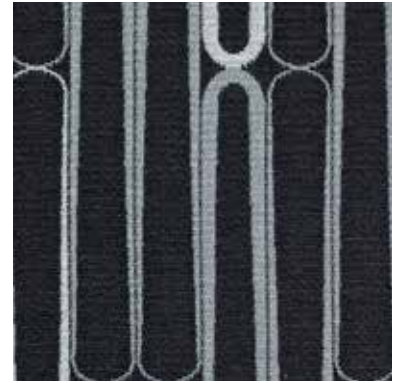
# VOX



VOX Sound



VOX Pop



VOX Amp

Patterns shown are not to scale  
Product may vary in colour due to the nature of the media  
Please refer to website for current colour range

# VOX by Michael Young



COMPOSITION	69% cotton, 31% nylon	
WIDTH	137cm	
WEIGHT	369gsm	
PATTERN REPEAT	H 35cm V 83.5cm	
ROLL SIZE	55m approx.	
CARE CODE	CTA 1	
ABRASION		
Wyzenbeek ASTM 4157	50,000 double rubs	
Martindale AS2001.2.25	40,000	
CTA RATING	<div style="display: flex; align-items: center;"> <div style="background-color: #333; color: white; padding: 5px; font-weight: bold; margin-right: 10px;">hc</div> <div>HEAVY DUTY COMMERCIAL USE</div> </div>	
SEAM SLIPPAGE	Warp 1.7mm Weft 1.5mm	
AS2001.2.22	Note: All seams must be overlocked or secured to prevent the premature failure of the seam due to fraying	
PILLING	5	
Martindale IWS196		
LIGHTFASTNESS	6	
ISO 105 B02		
FIRE RATINGS		
AS/NZS 1530.3	Ignitability	10
	Spread of Flame	0
	Heat Evolved	1
	Smoke Developed	4
AS/NZS 3837	BCA Group 2 Av. Specific Extinction Area 63.3m <sup>2</sup> /kg	
APPLICATION	upholstery, screens, wall panels	

## ENVIRONMENT

- 69% rapidly renewable content (cotton).
- Environmentally Improved Production Process: reduced energy consumption, reuse and recycling of waste and use of environmentally optimised dyes.
- IAQ: Cotton absorbs prevalent indoor air contaminants therefore benefiting indoor air quality.
- Reusable and 69% biodegradable (cotton).
- The manufacturer has an environmental policy.

## GREEN STAR + LEED

- VOX can be used on white furniture certified to Ecospecifier, AFRDI, GECA and ECNZ.
- The Green Star Rating Tool states “Where at least 90% of an item’s total mass is certified to a GBCA recognised standard, the item can be entered as a certified product at Level A, B or C.” Therefore any fabric can be used as fabrics are almost always under 10% by weight of a furniture item.
- 69% rapidly renewable content contributes to LEED MR Credit 6 Rapidly Renewable Materials.

## PATTERN REPEAT

