

BOUNCE

A refined playful oval pattern from the Kinetic collection.



INSTYLE

BOUNCE



BOUNCE Off



BOUNCE Around



BOUNCE Up



BOUNCE High



BOUNCE Message



BOUNCE Signal



BOUNCE Energy



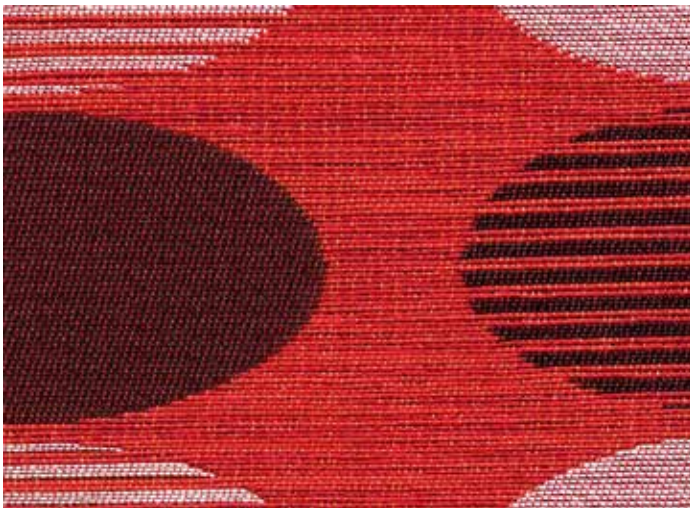
BOUNCE Ball



BOUNCE Idea

Patterns shown are not to scale
Product may vary in colour due to the nature of the media
Please refer to website for current colour range

BOUNCE



COMPOSITION	66% cotton, 25% nylon, 9% post-consumer recycled polyester	
WIDTH / WEIGHT	137cm / 404gsm	
PATTERN REPEAT	H 23.4cm V 27.9cm	
ROLL SIZE	55m approx.	
CARE CODE	CTA 1	
ABRASION	Martindale AS2001.2.25 >60,000 Wyzenbeek ASTM 4157 100,000 double rubs	
CTA RATING	hc HEAVY DUTY COMMERCIAL USE	
SEAM SLIPPAGE	Warp 3.5mm Weft 2.0mm AS2001.2.22 Note: All seams must be overlocked or secured to prevent the premature failure of the seam due to fraying	
PILLING	5 Martindale IWS196	
LIGHTFASTNESS	6 ISO 105 B02	
FIRE RATINGS	AS/NZS 1530.3	Ignitability 11 Spread of Flame 0 Heat Evolved 2 Smoke Developed 4
AS/NZS 3837 (Cone Calorimeter)	BCA Group 2 Av. Specific Extinction Area 81.8m ² /kg	
APPLICATION	upholstery, screens, wall panelling	

ENVIRONMENT

- 66% rapidly renewable content (cotton).
- 9% post-consumer recycled content (polyester).
- Environmentally Improved Production Process: reduced energy consumption, reuse and recycling of waste, and use of environmentally optimised dyes.
- Cotton absorbs prevalent indoor air contaminants therefore benefiting indoor air quality.
- Reusable and 66% biodegradable (natural fibre content).

GREEN STAR + LEED

- BOUNCE can be used on white furniture certified to Ecospecifier, AFRDI, GECA and ECNZ.
- The Green Star Rating Tool states "Where at least 90% of an item's mass is certified to a GBCA recognised standard, the item can be entered as a certified product at Level A, B or C." Therefore any fabric can be used as fabrics are almost always under 10% by weight of a furniture item.
- 66% rapidly renewable content contributes to LEED MR Credit 6 Rapidly Renewable Materials.
- 9% post consumer content contributes to LEED MR Credit 4 Recycled Content.

PATTERN REPEAT

