

# SMALL BASKETWEAVE



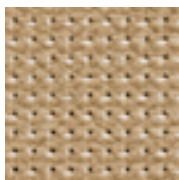
A subtle embossed  
Elmodesign pattern available  
on selected leathers

IINSTYLE

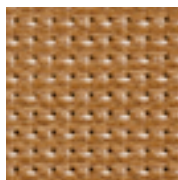


# SMALL BASKETWEAVE: ELMOBALTIQUE

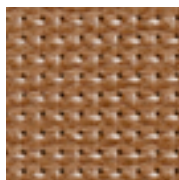
Aniline



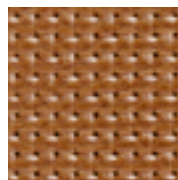
Elmobaltique 02001-SB



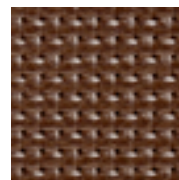
Elmobaltique 44038-SB



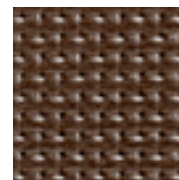
Elmobaltique 43001-SB



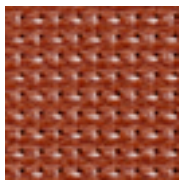
Elmobaltique 43003-SB



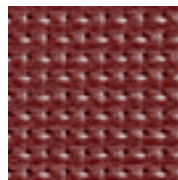
Elmobaltique 33280-SB



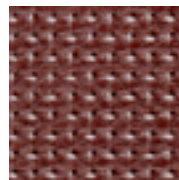
Elmobaltique 33441-SB



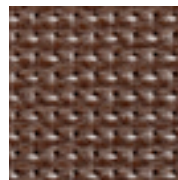
Elmobaltique 53001-SB



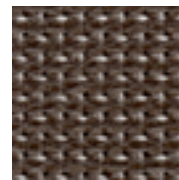
Elmobaltique 55053-SB



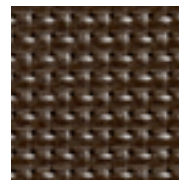
Elmobaltique 95052-SB



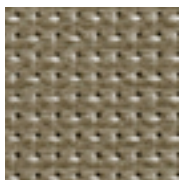
Elmobaltique 93347-SB



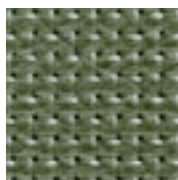
Elmobaltique 93002-SB



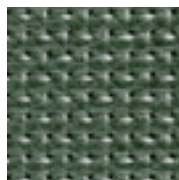
Elmobaltique 33037-SB



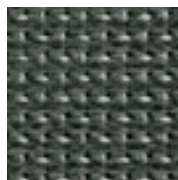
Elmobaltique 12036-SB



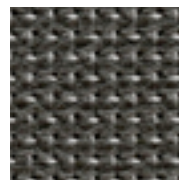
Elmobaltique 88042-SB



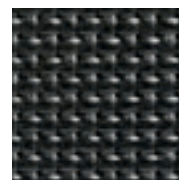
Elmobaltique 88054-SB



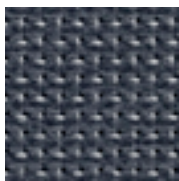
Elmobaltique 98001-SB



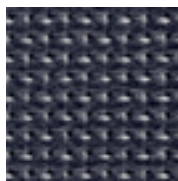
Elmobaltique 91035-SB



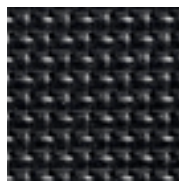
Elmobaltique 99011-SB



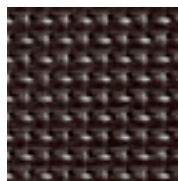
Elmobaltique 97056-SB



Elmobaltique 97001-SB



Elmobaltique 97055-SB

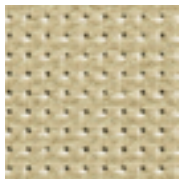


Elmobaltique 95442-SB

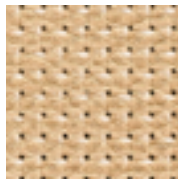
Embossed patterns shown are rendered,  
please refer to physical sample as colour may vary from screen

# SMALL BASKETWEAVE: ELMORUSTICAL

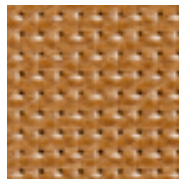
Aniline



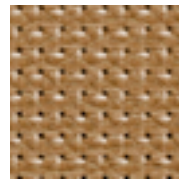
Elmorustical 02067-SB



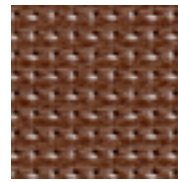
Elmorustical 22679-SB



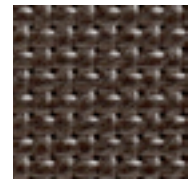
Elmorustical 43236-SB



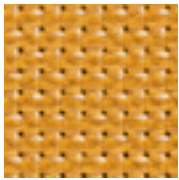
Elmorustical 43632-SB



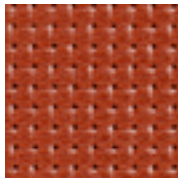
Elmorustical 33286-SB



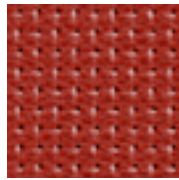
Elmorustical 93287-SB



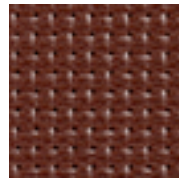
Elmorustical 44007-SB



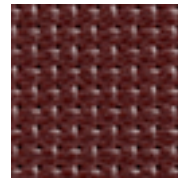
Elmorustical 53014-SB



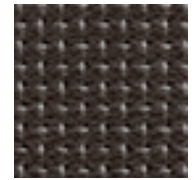
Elmorustical 55063-SB



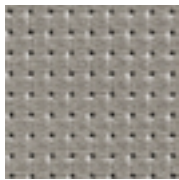
Elmorustical 53069-SB



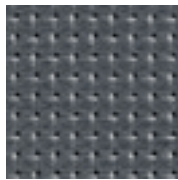
Elmorustical 95024-SB



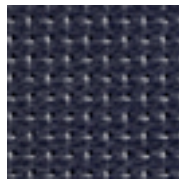
Elmorustical 93327-SB



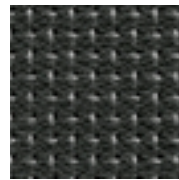
Elmorustical 12114-SB



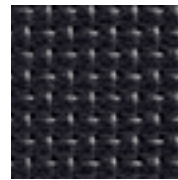
Elmorustical 71004-SB



Elmorustical 77020-SB



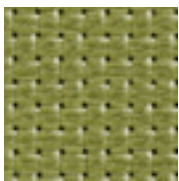
Elmorustical 91089-SB



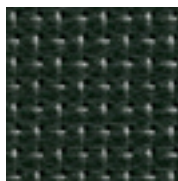
Elmorustical 97054-SB



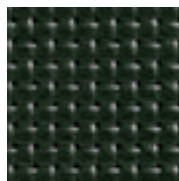
Elmorustical 99991-SB



Elmorustical 08006-SB



Elmorustical 98953-SB

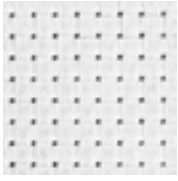


Elmorustical 88010-SB

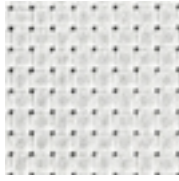
Embossed patterns shown are rendered,  
please refer to physical sample as colour may vary from screen

# SMALL BASKETWEAVE: ELMOSOFT X

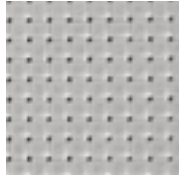
# Semi-Aniline



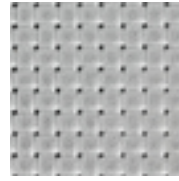
Elmosoft 00118-SB



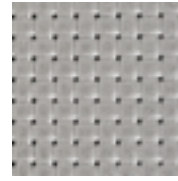
Elmosoft 00109-SB



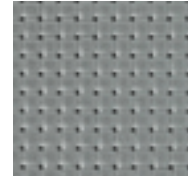
Elmosoft 01085-SB



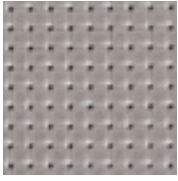
Elmosoft 01037-SB



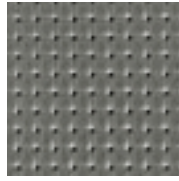
Elmosoft 11033-SB



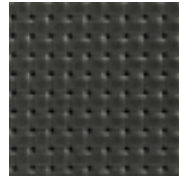
Elmosoft 01043-SB



Elmosoft 11073-SB



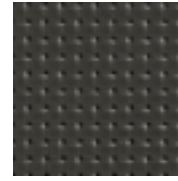
Elmosoft 11049-SB



Elmosoft 11062-SB



Elmosoft 91118-SB



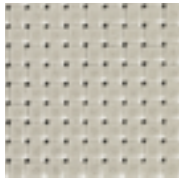
Elmosoft 98087-SB



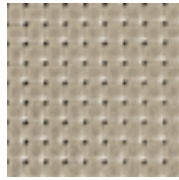
Elmosoft 93121-SB



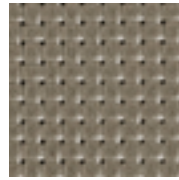
Elmosoft 00100-SB



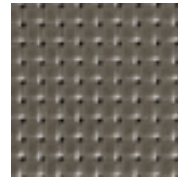
Elmosoft 01021-SB



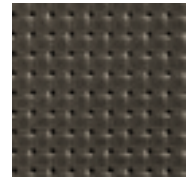
Elmosoft 01061-SB



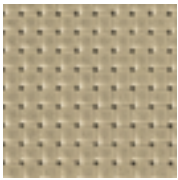
Elmosoft 13072-SB



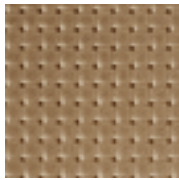
Elmosoft 01003-SB



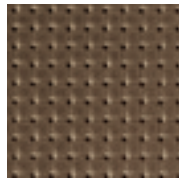
Elmosoft 13070-SB



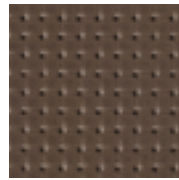
Elmosoft 02122-SB



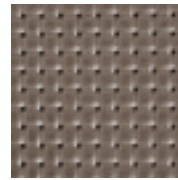
Elmosoft 22034-SB



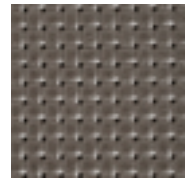
Elmosoft 13075-SB



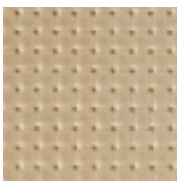
Elmosoft 93109-SB



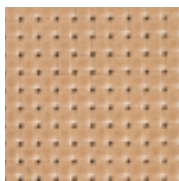
Elmosoft 13087-SB



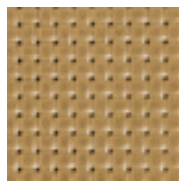
Elmosoft 13048-SB



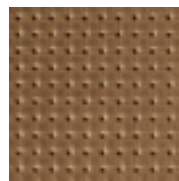
Elmosoft 02092-SB



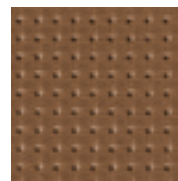
Elmosoft 22024-SB



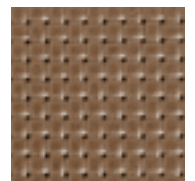
Elmosoft 22030-SB



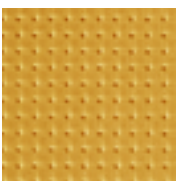
Elmosoft 03009-SB



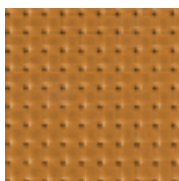
Elmosoft 33077-SB



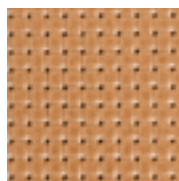
Elmosoft 43054-SB



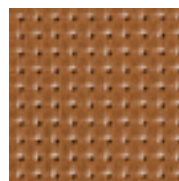
Elmosoft 44023-SB



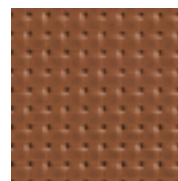
Elmosoft 54033-SB



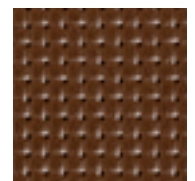
Elmosoft 44012-SB



Elmosoft 54035-SB



Elmosoft 54021-SB



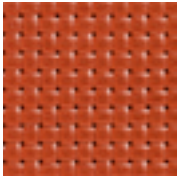
Elmosoft 33004-SB

Embossed patterns shown are rendered,  
please refer to physical sample as colour may vary from screen

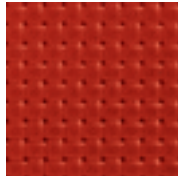


# SMALL BASKETWEAVE: ELMOSOFT X

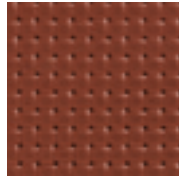
# Semi-Aniline



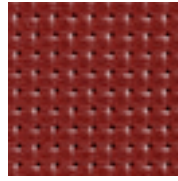
Elmosoft 45065-SB



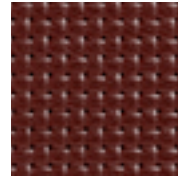
Elmosoft 45043-SB



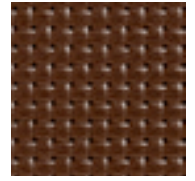
Elmosoft 45035-SB



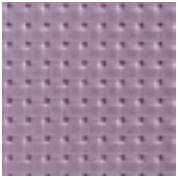
Elmosoft 55002-SB



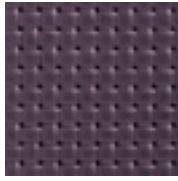
Elmosoft 35126-SB



Elmosoft 33001-SB



Elmosoft 16007-SB



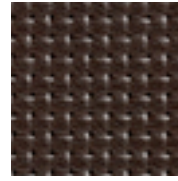
Elmosoft 76003-SB



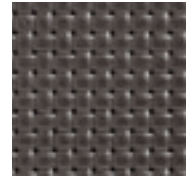
Elmosoft 16018-SB



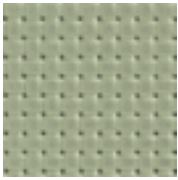
Elmosoft 75013-SB



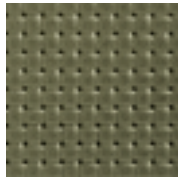
Elmosoft 93129-SB



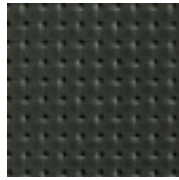
Elmosoft 93099-SB



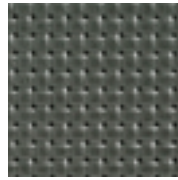
Elmosoft 08055-SB



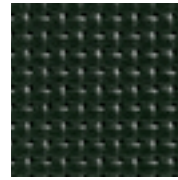
Elmosoft 18020-SB



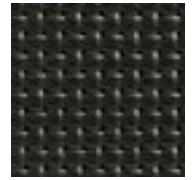
Elmosoft 11060-SB



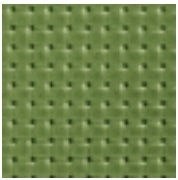
Elmosoft 98047-SB



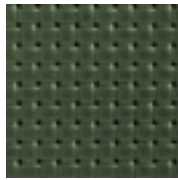
Elmosoft 98015-SB



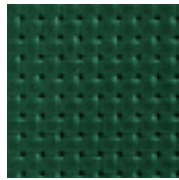
Elmosoft 93068-SB



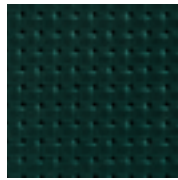
Elmosoft 08039-SB



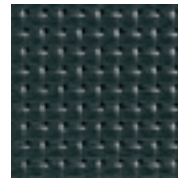
Elmosoft 88058-SB



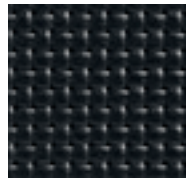
Elmosoft 88059-SB



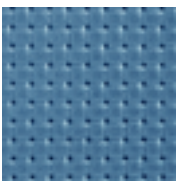
Elmosoft 78038-SB



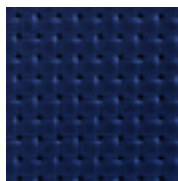
Elmosoft 71017-SB



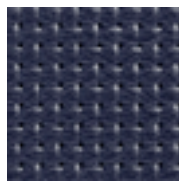
Elmosoft 97038-SB



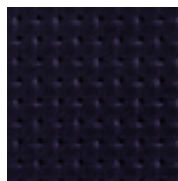
Elmosoft 07070-SB



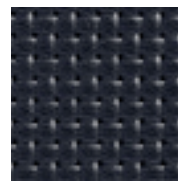
Elmosoft 77078-SB



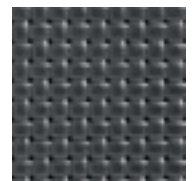
Elmosoft 77158-SB



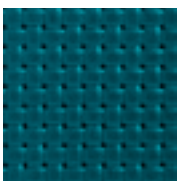
Elmosoft 07071-SB



Elmosoft 77127-SB



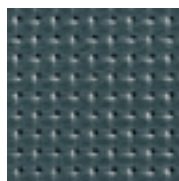
Elmosoft 91102-SB



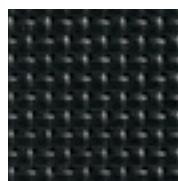
Elmosoft 87033-SB



Elmosoft 87025-SB



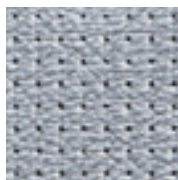
Elmosoft 17027-SB



Elmosoft 99999-SB

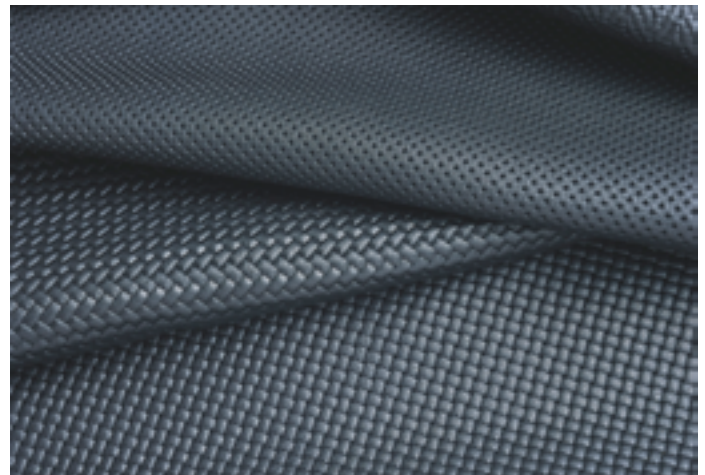
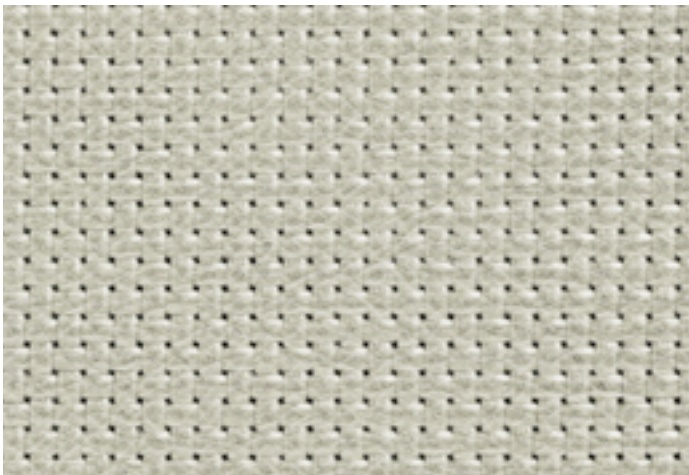
Embossed patterns shown are rendered,  
please refer to physical sample as colour may vary from screen

# SMALL BASKETWEAVE: ELMOTREASURE Semi-Aniline



Elmotreasure 00120-SB Elmotreasure 11097-SB Elmotreasure 54099-SB Elmotreasure 04098-SB Elmotreasure 43130-SB

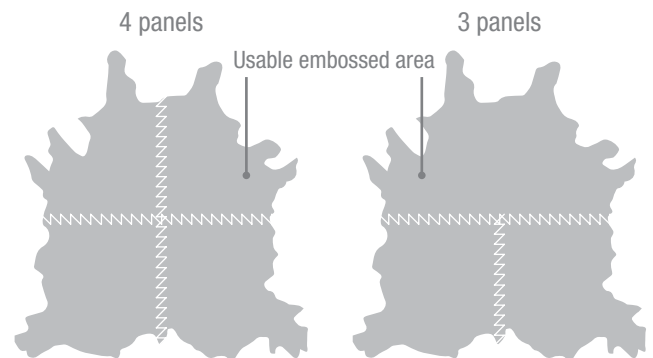
Embossed patterns shown are rendered,  
please refer to physical sample as colour may vary from screen



<b>PRODUCT</b>	Small Basketweave is an embossed Elmodesign pattern available on Elmobaltique, Elmosoft, Elmorustical and Elmotreasure
<b>AVERAGE HIDE SIZE</b>	5 sqm
<b>THICKNESS</b>	Elmobaltique: 1.3 - 1.5mm Elmosoft: 1.1 - 1.3mm Elmorustical: 1.3 - 1.5mm Elmotreasure: 1.1 - 1.3mm
<b>LEATHER TYPE</b>	Elmobaltique: Pure-Aniline Elmosoft: Semi-Aniline Elmorustical: Pure-Aniline Elmotreasure: Semi-Aniline
<b>APPLICATION</b>	Suitable for vertical surfaces and low traffic upholstery for commercial, residential and hospitality applications

**PLEASE NOTE**

After embossing the hide will display a firmer handle  
 The depth and character of the pattern may vary according to the hide structure and thickness  
 The hide is embossed in 3 or 4 panel sections with visible seams that will vary in size, shape and are not intended for use  
 Diagrams are representative and not to scale  
 Hide sizes will vary





**CERTIFICATIONS + STANDARDS**

- Leather Working Group Gold
- Low VOC
- Blue Angel Ecolabel
- Environmental Management System ISO 14001:2015 certified
- Compliant with European IPPC BAT for Tanning of Hides + Skins

**ENERGY + EMISSIONS**

- Net zero carbon footprint for leather processing
- Production facility uses 100% renewable electricity
- Scope 1 + 2 emissions quantified
- Tannery has set net zero target for product by 2040

**WATER + CHEMICALS**

- Water usage: 16.5m3 of recycled water per tonne rawhide
- No Substances of Very High Concern (SVHC) are used; Elmodesign leathers are free of PFCs, flame retardants, phthalates + urea formaldehyde
- Tannery aligns with ZDHC + AFIRM Group chemical management objectives
- Tannery uses a biological Water Treatment Plant, utilising 100% non-potable river water in a closed-loop process that purifies the water before returning it to the source

**CIRCULARITY + LIFECYCLE**

- Leather is a by-product of the food industry
- Leather is naturally durable, longlasting + reusable
- Tannery is 'Zero Waste' and creates no process waste or landfill
- All Contemporary Leathers can be accepted for takeback as part of our REVIVE® Product Stewardship Scheme

**TRACEABILITY**

- 100% of materials are traceable through chain of custody or physical marking
- Traceability Management System certified to ICEC TS PC 412

**LAND USE + BIODIVERSITY**

- All Contemporary Leathers are sourced from European locations which are free from deforestation risk
- European Union animal welfare law adheres to the requirements of the 'Five Freedoms'
- Processing by-products are used as fertilisers for local farms

**SOCIAL IMPACT**

- Leather Working Group conducts social audits and assesses health, safety + emergency preparedness
- Tannery certified in 'ICEC Social Responsibility' ensures social accountability and workers' rights internally + in upstream supply chain

**BUILDING RATING SYSTEMS**

Elmodesign leathers will contribute the following points for Green Star, LEED + WELL building standards:

Criteria	Green Star	LEED	WELL
Low VOC	✓	✓	✓
Product Stewardship Program	✓	✓	NA
Manufacturer EMS	✓	NA	NA
Toxic Material Reduction	NA	NA	✓

**GREEN STAR**

- Environmental Management System (6.1)
- Indoor Pollutants/Low VOC (12)
- Product Stewardship Program (21.1 E)
- Elmodesign leathers can be used on white furniture certified to Ecospecifier, AFRDI, ECNZ and GECA
- The Green Star Rating Tool states "Where at least 90% of an item's mass is certified to a GBCA recognised standard, the item can be entered as a certified product at Level A, B or C", therefore any leather can be used as leathers are almost always under 10% by weight of a furniture item

**LEED**

- Low Emitting Materials / Low VOC (EQ credit)
- Extended Producer Responsibility (MR credit)

**WELL**

- Air Quality/VOC Restrictions (A01 + X06)
- Materials Optimisation (X08)

