

# EXTREME

A modern high performance textile suitable for indoor + outdoor use.



INSTYLE

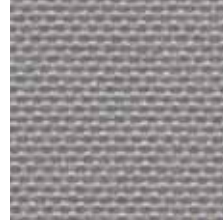
# EXTREME



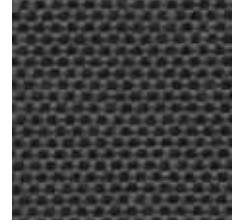
EXTREME Snow



EXTREME Quiet



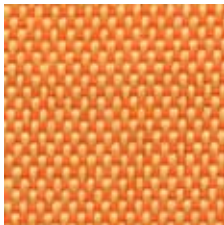
EXTREME Terrain



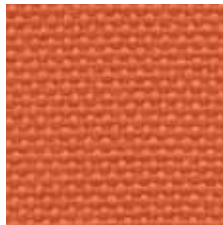
EXTREME Journey



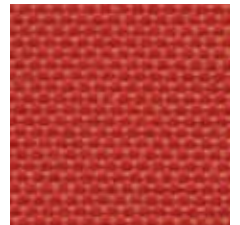
EXTREME Cudos



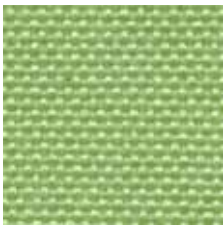
EXTREME Momentum



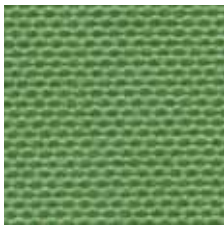
EXTREME Sports



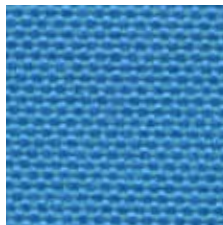
EXTREME Heat



EXTREME Clarity



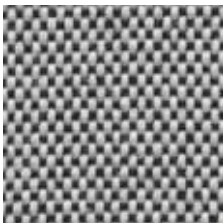
EXTREME Talent



EXTREME Surf



EXTREME Waves



EXTREME Precision



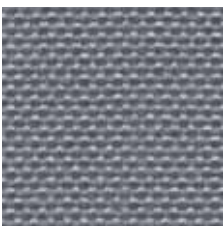
EXTREME Ability



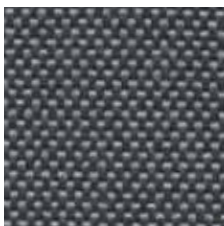
EXTREME Challenge



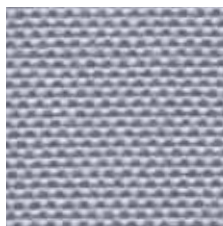
EXTREME Voyage



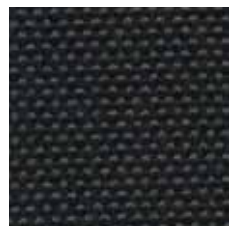
EXTREME Focus



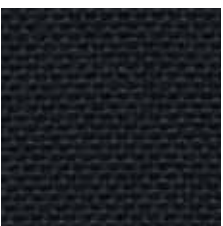
EXTREME Verve



EXTREME Pace



EXTREME Power




EXTREME Darkness

Product may vary in colour due to the nature of the media  
Please refer to website for current colour range

# EXTREME

## High Performance - Indoor + Outdoor



COMPOSITION	100% high UV polypropylene
WIDTH / WEIGHT	137cm / 260gsm
PATTERN REPEAT	nil
ROLL SIZE	50m approx.
CARE CODE	CTA 1
ABRASION Martindale AS2001.2.25	55,000
CTA RATING	 <b>HEAVY DUTY COMMERCIAL USE</b>
SEAM SLIPPAGE AS2001.2.22	Warp 3.3mm Weft 4.7mm Note: All seams must be overlocked or secured to prevent the premature failure of the seam due to fraying
PILLING Martindale IWS196	5
LIGHTFASTNESS ISO 105-B02	6-7
FIRE RATINGS AS/NZS 1530.3	Ignitability 13 Spread of Flame 0 Heat Evolved 2 Smoke Developed 4
AS/NZS 3837 Cone Calorimeter	BCA Group 2 Av. Specific Extinction Area 419.7 m <sup>2</sup> /kg
APPLICATION	indoor + outdoor upholstery, screen, wall panel
ORIGIN	Australia

### PERFORMANCE

- **Suitable for Indoor + Outdoor Use:** With its superior UV resistance and light resistance, EXTREME is ideal for indoor + outdoor applications.
- **Superior Light Fastness:** EXTREME has superior light fastness. This is due to the use of 100% solution-dyed polypropylene using dyestuffs selected for their high light fastness. Solution dyeing is a method of dyeing the fibre polymer while it is still in its molten form prior to fibre extrusion, which results in the colour being an inherent part of the fibre structure, unlike the yarn and fabric dyeing process where the dye molecules adhere to the surface of the fibres.
- **Superior UV Resistance:** EXTREME has superior UV resistance compared to most other textiles, resulting in a longer lasting textile when used in outdoor spaces. Therefore it is ideal to use both in indoor + outdoor applications including sunlit interiors, outdoor garden and pool areas, alfresco restaurants and bars, as well as leisure boating and outdoor stadium seating.

### ENVIRONMENT

- 100% third-party certified polypropylene yarn : met human-ecological requirements according to Oeko-Tex Standard 100 Class I.
- 100% low embodied-energy material: polypropylene has a lower embodied-energy compared to polyester and nylon.
- Environmentally Improved Production Process: reduced energy consumption, reuse and recycling of waste.

### GREEN STAR

- EXTREME can be used on white furniture certified to ECNZ, Ecospecifier, AFRDI and GECA.
- The Green Star Rating Tool states "Where at least 90% of an item's mass is certified to a GBCA recognised standard, the item can be entered as a certified product at Level A, B or C." Therefore any fabric can be used as fabrics are almost always under 10% by weight of a furniture item.