

FACE COMPOSITION	vinyl (PVC)
BACKING TYPE	polyester scrim
WIDTH	137cm
WEIGHT	340gsm / 465g lineal m
PATTERN REPEAT	non-match
ROLL SIZE	45.9m approx. Note: minimum order quantity is 10.9m and 0.9m multiples
PERFORMANCE	Type II Wallcovering
FIRE RATING AS/NZS 3837	BCA Group 1 Av. Specific Extinction Area 235.8 m2/kg
ISO 5660.1	NZBC Group 1S Av. Specific Extinction Area 228.5m2/kg
Additional Fire Tests	ASTM E-84 Tunnel Test Class A BS476 Part 6 + 7 Class 0 Class 1

ENVIRONMENT

- Uses eco friendly water-based ink technology
- No ozone-depleting chemicals or heavy metals such as lead, mercury, cadmium or chromium
- Manufacturer operates a comprehensive raw material recycling program

PRODUCT INSTALLATION

- Detailed installation instructions for DUPRE are supplied with each shipment and should be referred to before cutting or installing this wallcovering. A copy can also be obtained by our website or contacting your nearest office or agent.

CARE + MAINTENANCE

- General maintenance can be achieved with periodic dusting or vacuuming with a soft brush attachment.
- Remove ordinary dirt and smudges with a mild soap and warm water solution.
- Avoid all solvent based cleaners.
- Always test the solution on an inconspicuous portion of the wallcovering before proceeding, checking that there is no adverse effect on finish, colour or gloss.
- Care should be taken on dark colours due to the possibility of causing 'light marks'. Always use a blotting action rather than rubbing to avoid abrasion.
- Rinse lightly with clean water and sponge.
- Deeply embossed wallcoverings need extra attention in case suds or loosened dirt lodge in depressed surfaces.
- Dry with a soft lint free cloth or towel.
- A copy of DUPRE care and maintenance instructions can also be obtained by contacting your nearest office or agent.

WARRANTY

- For a period of 3 years from date of invoice this wallcovering is guaranteed to be first quality and free of manufacturing defects. This warranty applies only to professionally applied installations according to the recommended installation instructions, and proper care and maintenance using appropriate cleaning agents as outlined in the care and maintenance instructions.

DUPRE



Pearl 7430



Oyster 7431



Bisque 7433



Rattan 7432



Interlude 7427



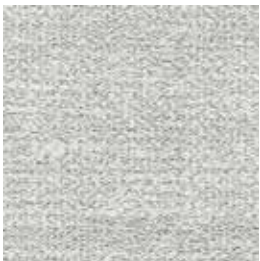
Mink 7435



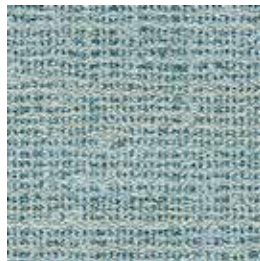
Griffen 7428



Sambuca 7434



Dove 7429



Schooner 7436

Patterns shown are not to scale
Product may vary in colour due to the nature of the media
Please refer to website for current colour range