

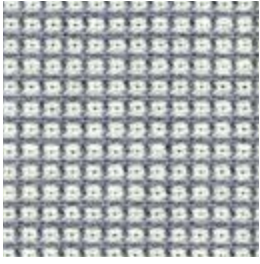
# MUSE

---

A versatile LIFE Textiles® design that epitomises simplicity and provenance

INSTYLE

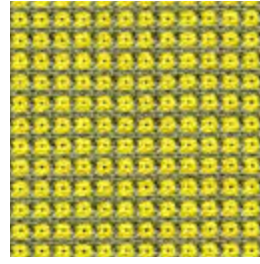
# MUSE



Key



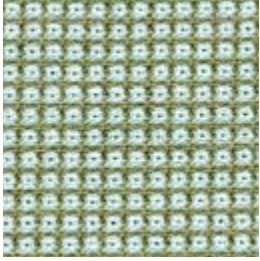
Trust



In Sync



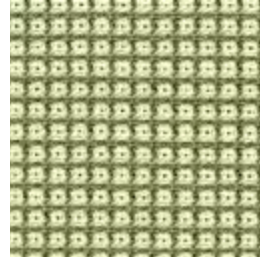
Brilliant



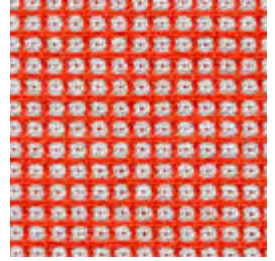
Enchant



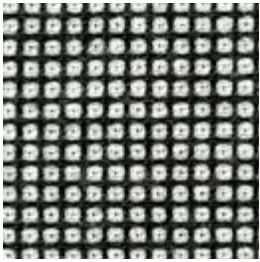
Dancer



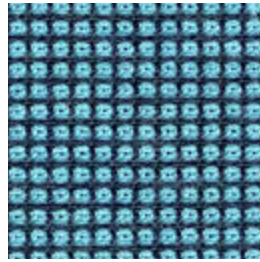
Revel



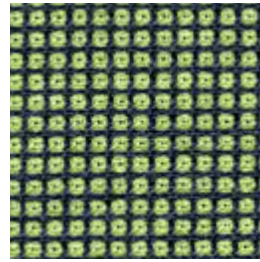
Model



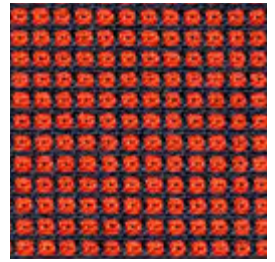
Unite



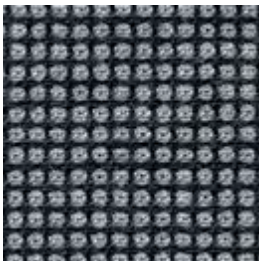
Harp



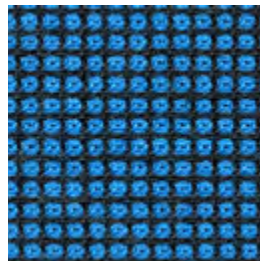
Guide



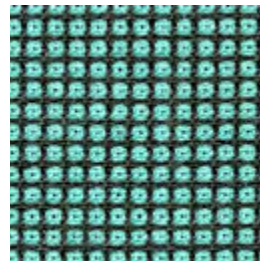
Famous



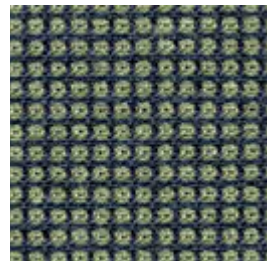
Visual



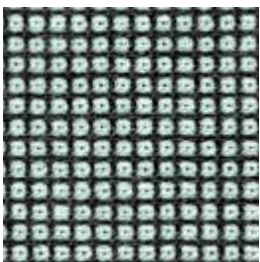
Artist



Protege

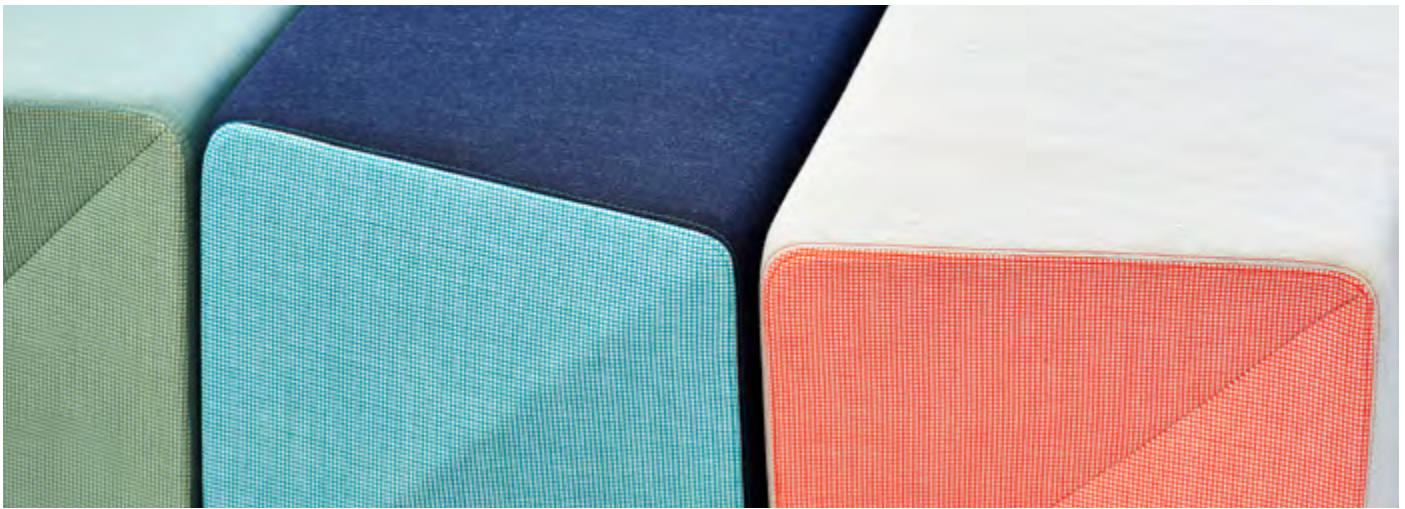


Sable



Concept

Product may vary in colour due to the nature of the media  
Please refer to website for current colour range



COMPOSITION	100% Australian worsted EthEco® wool
WIDTH / WEIGHT	137cm / 380gsm
PATTERN REPEAT	H 0.3cm V 0.3cm
ROLL SIZE	50m approx.
CARE CODE	CTA 1
ABRASION	
Martindale AS2001.2.25	100,000
Wyzenbeek ASTM 4157	46,000 double rubs
CTA RATING	<b>hc</b> HEAVY DUTY COMMERCIAL USE
SEAM SLIPPAGE	Warp 5mm Weft 4mm
AS2001.2.22	Note: All seams must be overlapped or secured to prevent the premature failure of the seam due to fraying
PILLING	5
Martindale IWS196	
LIGHTFASTNESS	>7
ISO B05 102	
FIRE RATINGS	Ignitability 0
AS/NZS 1530.3	Spread of Flame 0
	Heat Evolved 0
	Smoke Developed 2
AS/NZS 3837	BCA Group 1
	Av. Specific Extinction Area 57.6 m2/kg
ISO 5660.1	NZBC Group 1s
	in accordance with C/VM2 Appendix A
IMO Resolution A.625(16)	Sections 8.2 + 8.3: Pass
Additional Fire Tests	AS3744.1-2, California 117E, ASTM E84
APPLICATION	upholstery, screen, wall panel
ORIGIN	Made in Australia
PLEASE NOTE	Results from performance tests are guidelines only

**ENVIRONMENT**

- 100% sustainable, rapidly renewable content: EthEco® wool is sourced from non-mulesed sheep cared for on holistically-managed farms
- Environmentally Improved Production Process: Manufactured to strict environmental criteria, reduced water and energy use, reuse of water (30%), recycling of waste, no hazardous substances
- Wool absorbs indoor air contaminants, benefiting indoor air quality
- MUSE is certified as low-VOC
- 100% biodegradable and recyclable

**GREEN STAR**

MUSE can contribute points to the following Green Star criteria:

- Stewardship Programs: MUSE can be reused or recycled through our Revive recycling program
- Low-VOC
- MUSE can be used on white furniture certified to Ecospecifier, AFRDI, ECNZ and GECA
- The Green Star Rating Tool states “Where at least 90% of an item’s mass is certified to a GBCA recognised standard, the item can be entered as a certified product at Level A, B or C.” Therefore any fabric can be used as fabrics are almost always under 10% by weight of a furniture item

**LEED**

MUSE can contribute points to the following LEED criteria:

- Bio-Based + Rapidly-Renewable Content (100%)
- Low-VOC
- Extended Producer Responsibility Recycling Program

**WELL**

MUSE can contribute to the following WELL criteria:

- Low VOC / VOC Reduction: MUSE is low VOC
- Toxic Material Reduction: MUSE is free of PFCs, flame retardants, phthalates and urea formaldehyde