

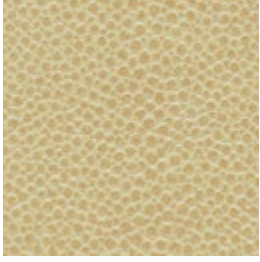
# VALENCIA

---

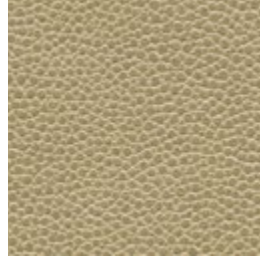
Made from bull hides,  
an elegant leather with  
an enhanced grain

INSTYLE

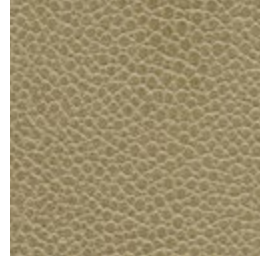
# VALENCIA



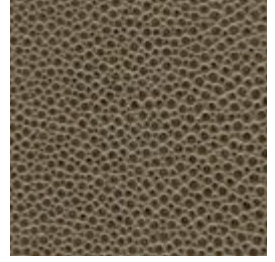
Chino



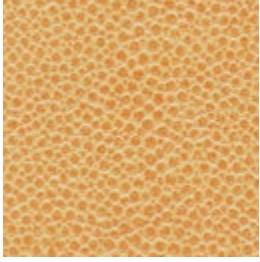
Sage



Thyme



Verdigris



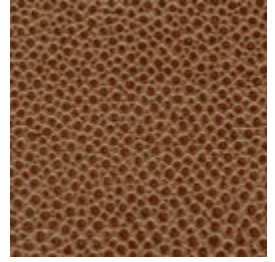
Honeycomb



Pecan



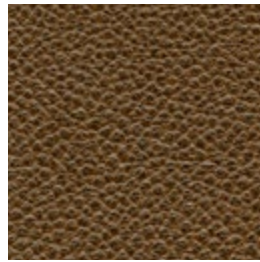
Teak



Cafe



Kumera



Tamarind




Burnt Toffee

Leather may vary in colour due to the nature of the media  
Please refer to website for current colour range





AVERAGE HIDE SIZE	4.5 sqm
THICKNESS	1.2 - 1.4mm
WEIGHT	968gsm
LEATHER TYPE	Semi-Aniline 
COLOURFASTNESS TO-AND-FRO RUBBING EN ISO 11640 + 11641	Dry 5 Wet 5 Perspiration 5
LIGHTFASTNESS EN ISO 105-B02	5
FINISH ADHESION EN ISO 11644	>475 N
pH AND ΔpH EN ISO 4045	ph 3.77 ΔpH 0.27
TEAR STRENGTH EN ISO 3377-1	72 N
FIRE RATINGS AS/NZS 1530.3	Ignitability 15 Spread of Flame 0 Heat Evolved 3 Smoke Developed 4
AS/NZS 3837	BCA Group 1 Av. Specific Extinction area 96.2m2/kg
IMO Resolution A.652(16)	Sections 8.2 + 8.3: Pass
APPLICATION	upholstery, wall panels
PLEASE NOTE	Sourced from high quality raw hides, Semi-Aniline leathers have a natural grain and invisible water-based protective coating to ensure the leather is suitable for the most demanding situations while maintaining a soft handle. A very fine pigment applied to the surface increases the leather's resistance to colour change caused by sunlight exposure. Results from performance tests are guidelines only.

**CARE**

- Leather Care for Finished Leathers is available from our website

**ENVIRONMENT**

- Leather is an agricultural by-product
- No hazardous substances are used
- Certified as low-VOC
- Reusable

**GREEN STAR**

- VALENCIA can contribute low VOC points
- VALENCIA can be used on white furniture certified to Ecospecifier, AFRDI, ECNZ and GECA
- The Green Star Rating Tool states “Where at least 90% of an item’s mass is certified to a GBCA recognised standard, the item can be entered as a certified product at Level A, B or C.” Therefore any leather can be used as leathers are almost always under 10% by weight of a furniture item

**LEED**

- VALENCIA can contribute low VOC points

**WELL**

- VALENCIA can contribute to Low VOC / VOC Reduction

**SEATING COMFORT RATING**



A rating to determine a leather’s seating comfort based upon the leather’s ability to breathe and absorb moisture. Tested to ASTM E 96 M-05. VALENCIA achieves a Very Good Seating Comfort rating.