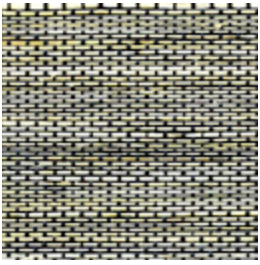


SABAH

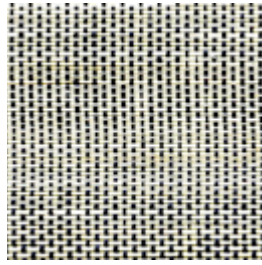
A beautiful and inviting
textural wallcovering
rich in natural variation

INSTYLE

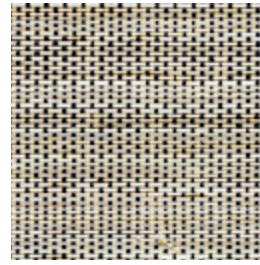
SABAH



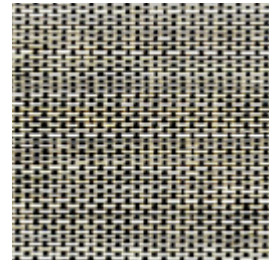
Tiga SAB-600



Gaya SAB-500



Danum SAB-400



Sulu SAB-300



Rajang SAB-200



Crocker SAB-100

Patterns shown are not to scale
Product may vary in colour due to the nature of the media
Please refer to website for current colour range



FACE COMPOSITION	abaca + filament yarn
BACKING TYPE	paper
WIDTH	91cm
WEIGHT	239gsm / 217g lineal m
PATTERN REPEAT	non match
ROLL SIZE	24.7m approx. Note: minimum order quantity is 10.9m and 0.9m multiples
PERFORMANCE	Untyped Wallcovering
FIRE RATING AS/NZS 3837	BCA Group 1 Av. Specific Extinction Area 78 m2/kg
ISO 5660.1	NZBC Group 1 Av. Specific Extinction Area 57 m2/kg in accordance with C/VM2 Appendix A
Additional Fire Tests	ASTM E-84 Tunnel Test Class A
NOTE	SABAH may exhibit variations in colour and texture. This is integral to the beauty and character of the handcrafted organic material. Seams may be obvious upon installation and there will be a panelling effect.

ENVIRONMENT

- SABAH is breathable, which aids in reducing mould and mildew on the wall.
- All inks and coatings used are water soluble and do not contain heavy metals such as chromium, cadmium, mercury or lead.
- SABAH is woven from the natural fibre abaca and filament yarn. Due to its natural content, it is free of heavy metals and plasticisers.



PRODUCT INSTALLATION

- Before cutting or installing this wallcovering, please refer to the detailed installation instructions for SABAH supplied with each shipment and available from our website.

CARE + MAINTENANCE

- Due to the delicate nature of the finishes, care must be taken not to damage or mark the surface due to abrasion / rubbing.
- General maintenance can be achieved with periodic dusting or vacuuming with a soft brush attachment.
- Remove ordinary dirt and smudges with a mild soap and warm water solution.
- Always test the solution on an inconspicuous portion of the wallcovering before proceeding, checking that there is no adverse effect on finish, colour or gloss.
- Care should be taken on dark colours due to the possibility of causing 'light marks'. Always use a blotting action rather than rubbing to avoid abrasion.
- Rinse thoroughly with clean water from the top down using a sponge.
- Dry with a soft lint free cloth or towel.
- Avoid alcohol / solvent based cleaners.
- Please refer to the SABAH care and maintenance instructions for further details. A copy is available on our website.

WARRANTY

- For a period of 3 years from date of invoice this wallcovering is guaranteed to be first quality and free of manufacturing defects. This warranty applies only to professionally applied installations according to the recommended installation instructions, and proper care and maintenance using appropriate cleaning agents as outlined in the care and maintenance instructions.