

ROPPONGI

A sophisticated natural
wallcovering with a
subtle metallic texture



INSTYLE

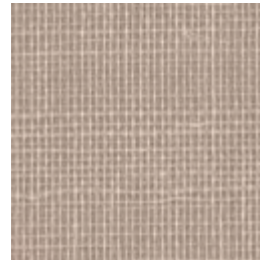
ROPPONGI



Colada ROP-05



Fizz ROP-10



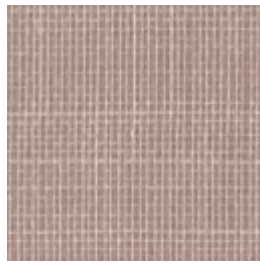
Daiquiri ROP-06



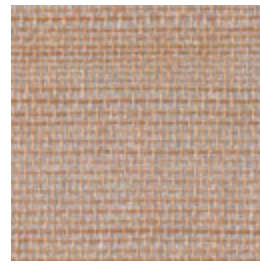
Mai Tai ROP-12



Mojito ROP-14



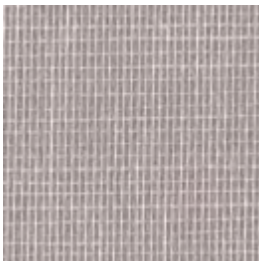
Cocktail ROP-07



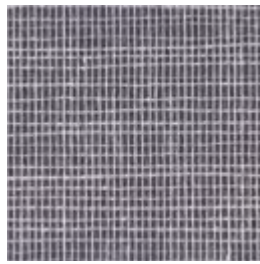
Martini ROP-11



Cosmopolitan ROP-13

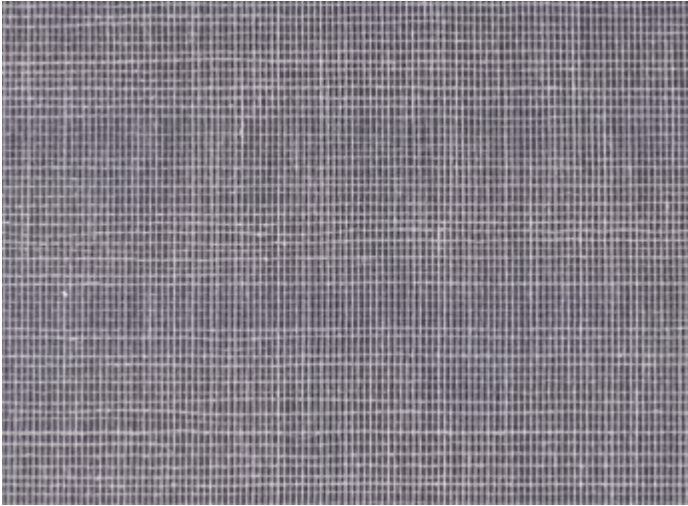


Mimosa ROP-08



Margarita ROP-09

Patterns shown are not to scale
Product may vary in colour due to the nature of the media
Please refer to website for current colour range



FACE COMPOSITION	62% cellulose, 23% linen, 15% cotton
BACKING TYPE	paper
WIDTH	91cm
WEIGHT	170gsm / 155g lineal m
PATTERN REPEAT	non-match
ROLL SIZE	10.9m approx. Note: minimum order quantity is 10.9m and 3.6m multiples
PERFORMANCE	Type 1 Wallcovering
FIRE RATING AS/NZS 3837	BCA Group 1 Av. Specific Extinction Area 6.6 m2/kg
ISO 5660.1	NZBC Group 1-S (in accordance with C/VM2 appendix A)
Additional Fire Tests	ASTM E-84 Tunnel Test Class A

NOTE

- ROPPONGI may exhibit variations in colour and texture. This is integral to the beauty and character of the handcrafted organic material.
- Seams may be obvious upon installation and there will be a panelling effect.

ENVIRONMENT

- ROPPONGI is woven from a blend of cellulose, cotton and linen and backed with recycled paper. Due to its natural content, it is free of heavy metals, plasticisers and fire retardant chemicals.

PRODUCT INSTALLATION

- Please refer to installation instructions for ROPPONGI supplied with each shipment. A copy is also available on our website.
- All material must be installed in numerical sequence as cut from the roll.

CARE + MAINTENANCE

- Due to the delicate nature of the finishes, care must be taken not to damage or mark the surface due to abrasion / rubbing.
- General maintenance can be achieved with periodic dusting or vacuuming with a soft brush attachment.
- Remove ordinary dirt and smudges with a mild soap and warm water solution.
- Always test the solution on an inconspicuous portion of the wallcovering before proceeding, checking that there is no adverse effect on finish, colour or gloss.
- Care should be taken on dark colours due to the possibility of causing 'light marks'. Always use a blotting action rather than rubbing to avoid abrasion.
- Rinse thoroughly with clean water from the top down using a sponge.
- Dry with a soft lint free cloth or towel.
- Avoid alcohol / solvent based cleaners.
- Please refer to the ROPPONGI care and maintenance instructions for further details. A copy is available on our website.

WARRANTY

- For a period of 3 years from date of invoice this wallcovering is guaranteed to be first quality and free of manufacturing defects. This warranty applies only to professionally applied installations according to the recommended installation instructions, and proper care and maintenance using appropriate cleaning agents as outlined in the care and maintenance instructions.

