



# REFLECT

—  
A versatile and reversible  
soft furnishing textile with a  
calming wave pattern

IINSTYLE

# REFLECT



REFLECT Coconut



REFLECT Infuse



REFLECT Resort



REFLECT Beach



REFLECT Lemon



REFLECT Spritzer



REFLECT Essence



REFLECT Spice



REFLECT Iceberg



REFLECT Mist



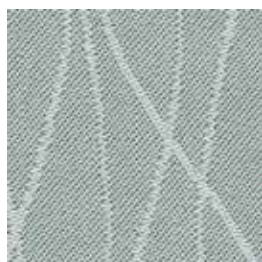
REFLECT Bliss



REFLECT Harmony



REFLECT Power



REFLECT Wave

Product may vary in colour due to the nature of the media  
Patterns shown are not to scale  
Please refer to website for current colour range



COMPOSITION	100% polyester
WIDTH	220cm (width becomes length when railroaded)
WEIGHT	219gsm
PATTERN REPEAT	H 14.8cm V 14cm (railroaded)
ROLL SIZE	50m approx.
CARE CODE	Curtain/Bedsread: Polyester Healthcare Partition/Wall Panel: Screen Care Soft Furnishing: Polyester Soft Furnishings
LIGHTFASTNESS AS 2001.4.21	6+
FIRE RATINGS AS/NZS 1530.3	Ignitability 0 Spread of Flame 0 Heat Evolved 0 Smoke Developed 0-1
AS/NZS 3837	BCA Group 1 Av. Specific Extinction Area 497.8 m2/kg
APPLICATION	curtains, privacy screens, bedsreads, screens, partitions, wall panels Note: protect curtains with suitable lining if exposed to direct sunlight
ORIGIN	Made in Australia

#### PERFORMANCE

- Reversible design
- Easy to wash, quick drying with minimal shrinkage
- Designed to withstand hospital and healthcare laundry and performance standards:
- AS/NZS 4146 Australian and New Zealand Standard for Laundry Practice
- AS3789.9 Textiles for healthcare facilities and institutions: Curtains and patient bedscreens: fabric performance properties for colourfastness
- AS2663.1 Textiles - fabrics for window furnishings: Uncoated fabrics - dimensional change

#### ENVIRONMENT + GREEN STAR

- Oeko Tex certified polyester yarn
- Reduced water and energy consumption, recycling of waste
- REFLECT can be used on white vertical surfaces certified by Ecospecifier, AFRDI, ECNZ and GECA
- The Green Star Rating Tool states "Where at least 90% of an item's mass is certified to a GBCA recognised standard, the item can be entered as a certified product at Level A, B or C." Therefore any fabric can be used as fabrics are almost always under 10% by weight of a furniture item

#### LAUNDRY GUIDELINES FOR THERMAL DISINFECTION

##### Laundry Sorting

- Wash separately. Do not wash with cotton articles
- Colours, whites and heavily soiled articles should be washed separately

##### Washing

- Use a reduced load (approx 1/2 of usual)
- Break wash 59-68°F (15-20°C) for 3 minutes with detergent (Do not wash with soap)
- Main wash 167-176°F (75-80°C) for 12 minutes with detergent as above
- A chlorine based disinfectant may be used

##### Rinsing

- Rinse thoroughly
- Avoid crash cooling which causes excessive and permanent creasing
- Rinse a second time with cold water
- Do not use softener or fabric conditioner without prior testing its effect on polyester fabrics

##### Drying

- Short tumble dry - Max 176°F (80°C)
- Do not overdry as this causes static
- For calendaring ensure articles have a residual moisture of 20 – 30%
- Keep dry wash below 248°F (120°C) on calender

Note: Please contact your account manager for Screen Care Instructions or Polyester Soft Furnishing Care Instructions