

POP

A practical and versatile textile with a playful circular pattern.



INSTYLE

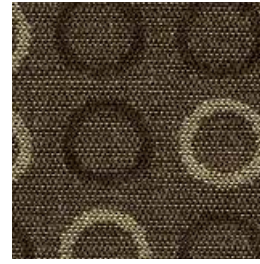
POP



POP The Question



POP On The Rocks



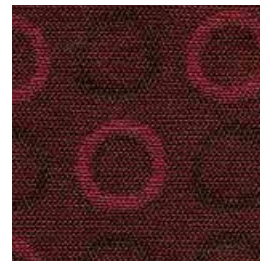
POP Cork



POP Happy Hour



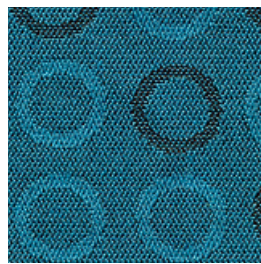
POP Fire Cracker



POP Bubble



POP Apple Jack



POP Dance



POP In



POP Soda



POP Music

Product may vary in colour due to the nature of the media
Patterns shown are not to scale
Please refer to website for current colour range

POP



COMPOSITION	100% polyester
WIDTH	137cm
WEIGHT	291gsm
PATTERN REPEAT	H 17.8cm V 17.2cm
ROLL SIZE	50m
CARE CODE	CTA 1
ABRASION	
Wyzenbeek ASTM 4157	>100,000 double rubs
Martindale AS2001.2.25	59,000
CTA RATING	hc HEAVY DUTY COMMERCIAL USE
SEAM SLIPPAGE	Warp 3.3mm Weft 2.7mm
AS2001.2.22	Note: All seams must be overlocked or secured to prevent the premature failure of the seam due to fraying
PILLING	4 - 5
Martindale IWS196	
LIGHTFASTNESS	6
AS 2001.4.21	
FIRE RATINGS	
AS/NZS 1530.3	Ignitability 11
	Spread of Flame 0
	Heat Evolved 2
	Smoke Developed 4
AS/NZS 3837	BCA Group 1
	Av. Specific Extinction Area 369m ² /kg
APPLICATION	upholstery, screens, wall panels

ENVIRONMENT

- Environmentally Improved Production Process: reduced energy consumption, reuse and recycling of waste.

GREEN STAR

- POP can be used on white furniture certified to Ecospecifier, AFRDI, ECNZ and GECA.
- The Green Star Rating Tool states “Where at least 90% of an item’s mass is certified to a GBCA recognised standard, the item can be entered as a certified product at Level A, B or C.” Therefore any fabric can be used as fabrics are almost always under 10% by weight of a furniture item.