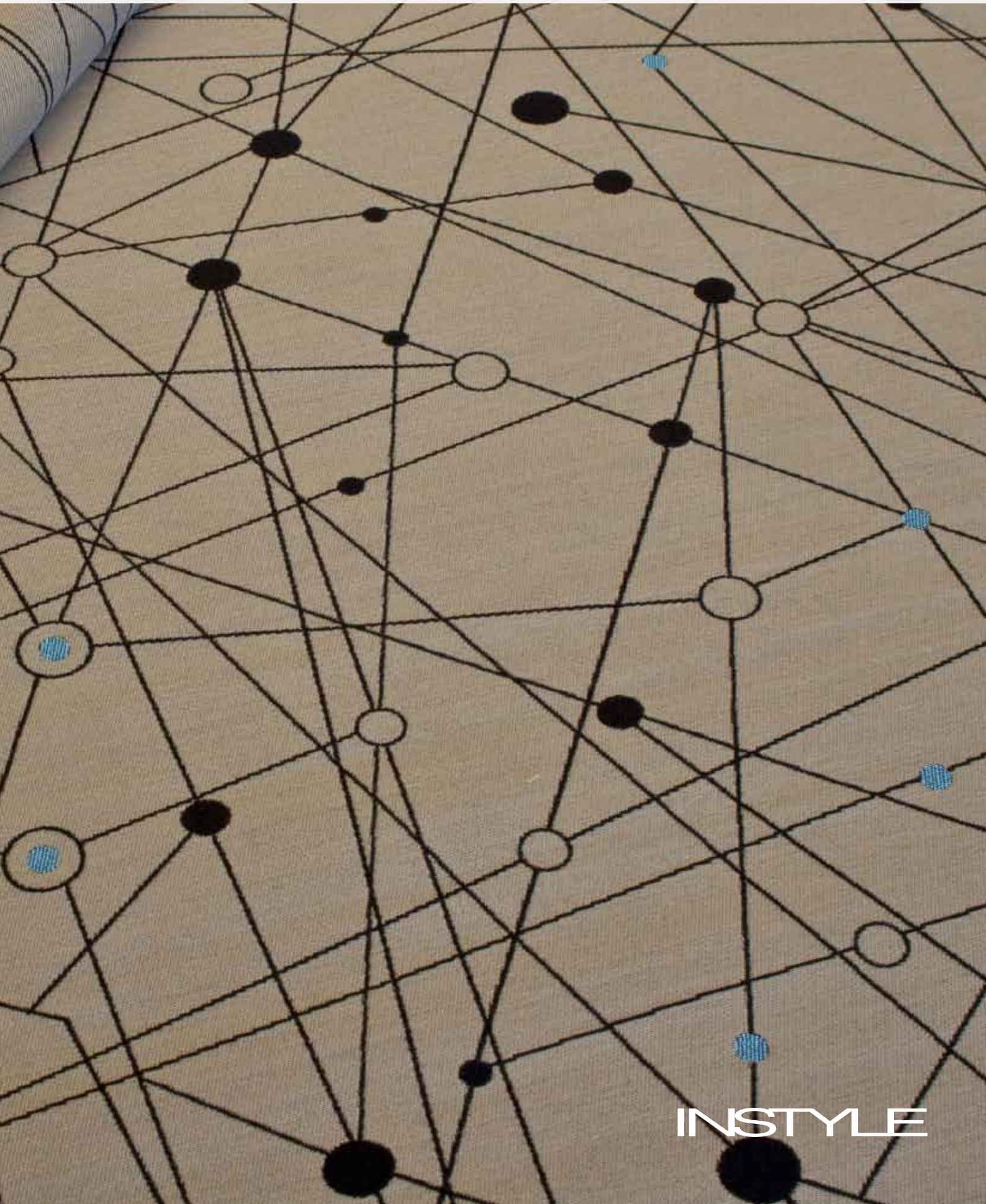


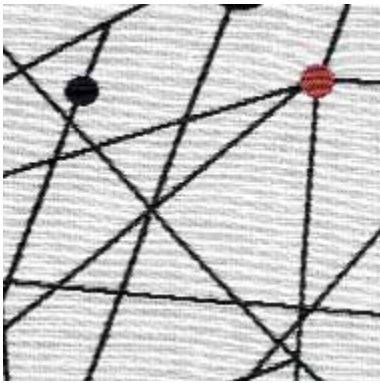
# MOLECULAR

Inspired by the unexpected, a dynamic and abstract fabric pattern by Ilias.

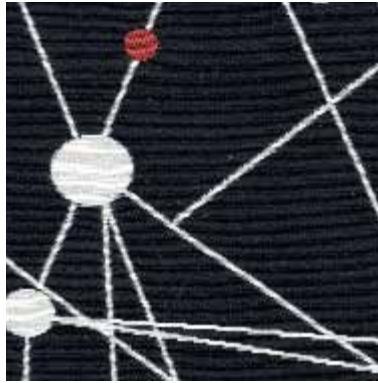


INSTYLE

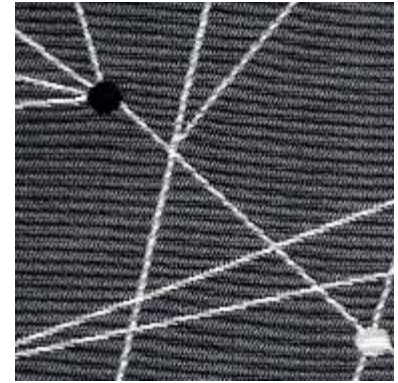
# MOLECULAR



MOLECULAR Structure



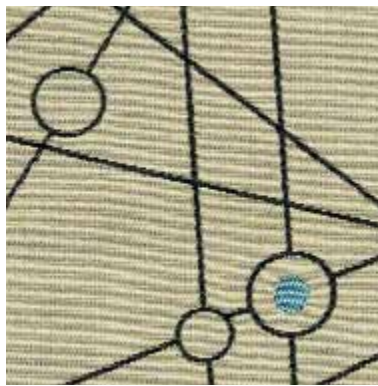
MOLECULAR Atom



MOLECULAR Science



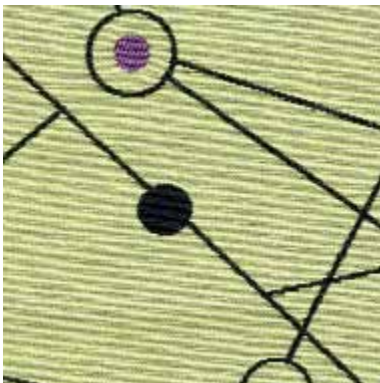
MOLECULAR Bond



MOLECULAR Formula



MOLECULAR Cell



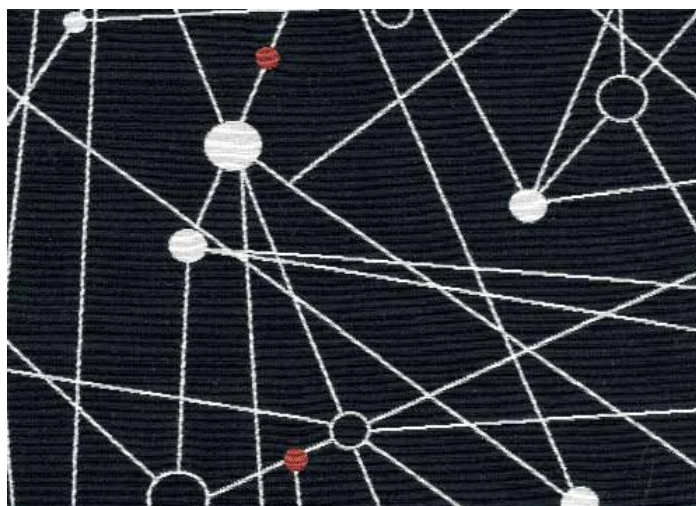
MOLECULAR Biology



MOLECULAR Particle

Product may vary in colour due to the nature of the media  
Patterns shown are not to scale  
Please refer to website for current colour range

# MOLECULAR by Ilias



COMPOSITION	69% cotton, 31% nylon
WIDTH	137 cm
WEIGHT	361gsm
PATTERN REPEAT	H 70cm V 93.5cm
ROLL SIZE	55 m approx.
CARE CODE	CTA 1
ABRASION Wyzenbeek ASTM 4157 Martindale AS2001.2.25	>100,000 double rubs >100,000
CTA RATING	<b>hc</b> HEAVY DUTY COMMERCIAL USE
SEAM SLIPPAGE AS2001.2.22	Warp 3.0 mm Weft 1.6 mm Note: All seams must be overlocked or secured to prevent the premature failure of the seam due to fraying
PILLING Martindale IWS196	5
LIGHTFASTNESS ISO 105 B02	6
FIRE RATINGS AS/NZS 1530.3	Ignitability 10 Spread of Flame 0 Heat Evolved 1 Smoke Developed 4
AS/NZS 3837	BCA Group 2 Av. Specific Extinction Area 63.3 m <sup>2</sup> /kg
APPLICATION	upholstery, screens, wall panels

## ENVIRONMENT

- 69% rapidly renewable content (cotton).
- Environmentally Improved Production Process: reduced energy consumption, reuse and recycling of waste, and use of environmentally optimised dyes.
- Cotton absorbs prevalent indoor air contaminants therefore benefiting indoor air quality.
- Reusable and 69% biodegradable (natural fibre content).
- The manufacturer has an environmental policy.

## GREEN STAR + LEED

- MOLECULAR can be used on white furniture certified to Ecospecifier, AFRDI, ECNZ and GECA.
- The Green Star Rating Tool states "Where at least 90% of an item's total mass is certified to a GBCA recognised standard, the item can be entered as a certified product at Level A, B or C." Therefore any fabric can be used as fabrics are almost always under 10% by weight of a furniture item.
- 69% rapidly renewable content contributes to LEED MR Credit 6 Rapidly Renewable Materials.