

LASER



A smart and playful
linear pattern inspired by
technological precision

INSTYLE

LASER



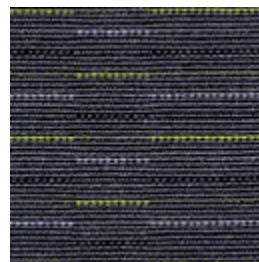
LASER Effect



LASER Show



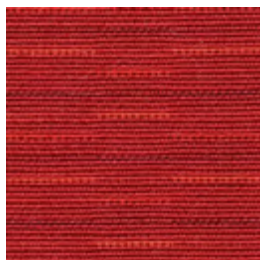
LASER Cut



LASER Image



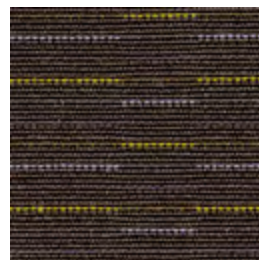
LASER Spark



LASER Beam



LASER Light



LASER Device



LASER Vision



LASER Technology



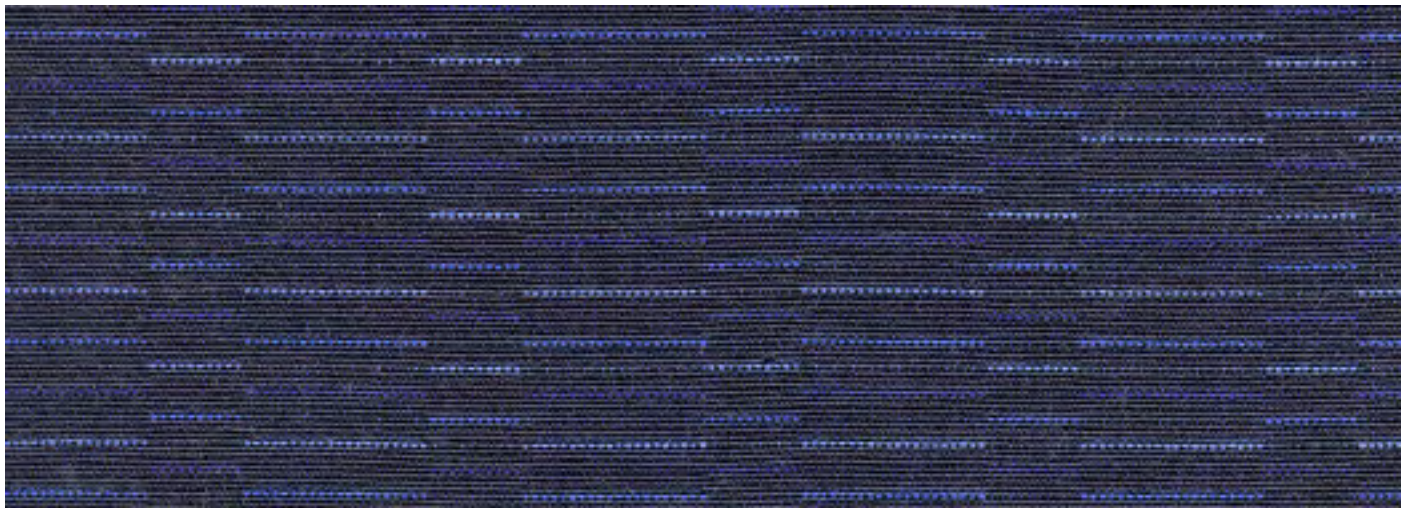
LASER Level




LASER Printer

Product may vary in colour due to the nature of the media
Patterns shown are not to scale
Please refer to website for current colour range

LASER



COMPOSITION	60% Australian worsted EthEco® wool, 40% low-VOC polyester	
WIDTH / WEIGHT	137cm / 355gsm	
PATTERN REPEAT	H 3.7cm V 2.1cm	
ROLL SIZE	60m approx.	
CARE CODE	CTA 1	
ABRASION Martindale AS2001.2.25	50,000	
CTA RATING		HEAVY DUTY COMMERCIAL USE
SEAM SLIPPAGE AS2001.2.22	Warp 4.0mm Weft 3.5mm Note: All seams must be overlocked or secured to prevent the premature failure of the seam due to fraying	
PILLING Martindale IWS196	5	
LIGHTFASTNESS AS 2001.4.21	6	
FIRE RATINGS AS/NZS 1530.3	Ignitability	10
	Spread of Flame	0
	Heat Evolved	1
	Smoke Developed	5
AS/NZS 3837	BCA Group 2	
	Av. Specific Extinction Area	206.3m2/kg
Additional Fire Tests	California 117E, ASTM E84	
APPLICATION	upholstery, screens, wall panels	
ORIGIN	Australia	

ENVIRONMENT

- 60% sustainable, rapidly-renewable content: EthEco® wool is sourced from non-mulesed sheep cared for on holistically-managed farms.
- Environmentally Improved Production Process: Reduced water and energy use, reuse of water (30%), recycling of waste, no hazardous substances such as heavy metal dyes.
- Wool absorbs indoor air contaminants, benefiting indoor air quality.
- 40% low-VOC polyester.
- 60% biodegradable and recyclable.

GREEN STAR + LEED

- LASER is certified to the EU Ecolabel.
- LASER can be used on white and upholstered furniture certified by AFRDI, GECA, ECNZ and Ecospecifier (Level B + C).
- The Green Star Rating Tool states “Where at least 90% of an item’s mass is certified to a GBCA recognised standard, the item can be entered as a certified product at Level A, B or C.” Therefore any fabric can be used as fabrics are almost always under 10% by weight of a furniture item.
- 60% rapidly renewable content contributes to LEED MR Credit 6 Rapidly Renewable Materials.



EU Ecolabel: UK/16/009