

CHUNKY

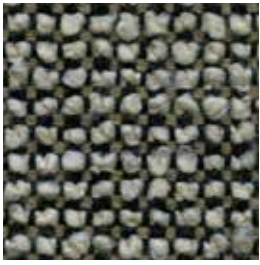
—

An exaggerated modern texture with a warm and luxurious aesthetic



INSTYLE

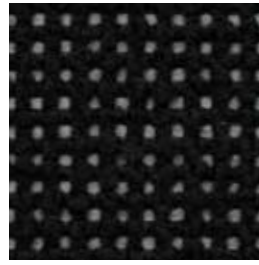
CHUNKY



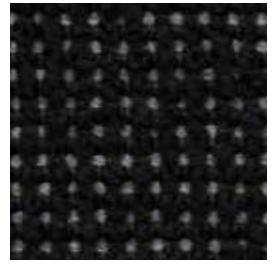
CHUNKY Profile



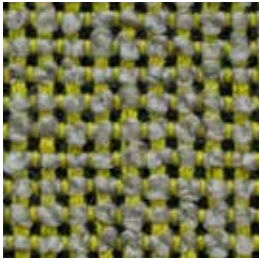
CHUNKY Rock



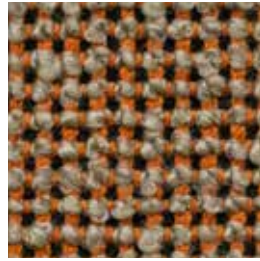
CHUNKY Mama



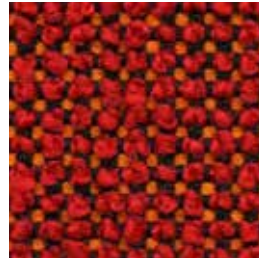
CHUNKY Chocolate



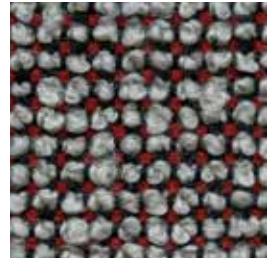
CHUNKY Ice



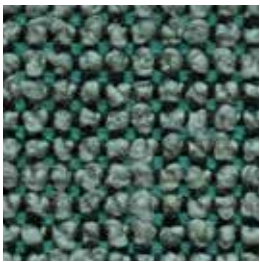
CHUNKY Look



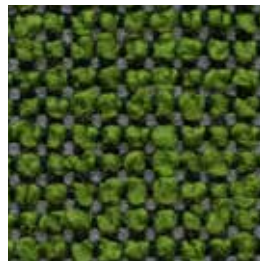
CHUNKY Jam



CHUNKY Beats



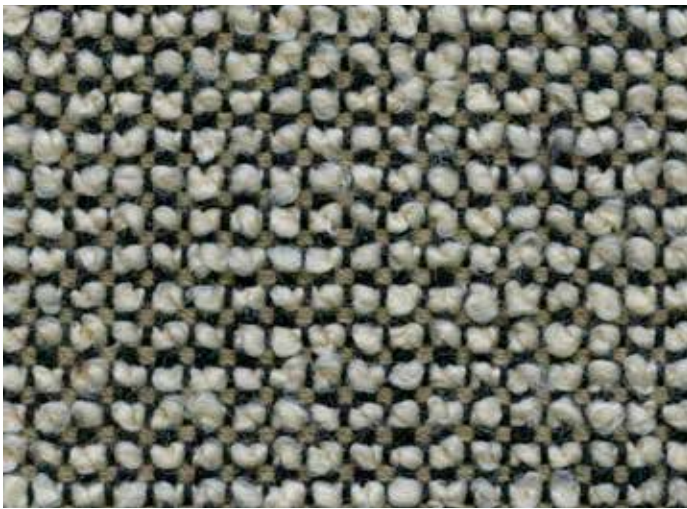
CHUNKY Heels



CHUNKY Apple

Patterns shown are not to scale
Product may vary in colour due to the nature of the media
Please refer to website for current colour range

CHUNKY



COMPOSITION	96% non-mulesed wool, 4% nylon	
WIDTH / WEIGHT	137cm / 760gsm	
PATTERN REPEAT	nil	
ROLL SIZE	26m approx.	
CARE CODE	CTA 1	
ABRASION		
Martindale AS2001.2.25	50,000	
Wyzenbeek ASTM D4157	60,000	
CTA RATING	<div style="display: flex; align-items: center;"> <div style="background-color: #333; color: white; padding: 5px; font-weight: bold; font-size: 1.2em; margin-right: 5px;">hc</div> <div> <p>HEAVY DUTY COMMERCIAL USE</p> </div> </div>	
SEAM SLIPPAGE	Warp 5.5mm Weft 7.3mm	
AS2001.2.22	Note: All seams must be overlapped or secured to prevent the premature failure of the seam due to fraying	
PILLING	4-5	
Martindale IWS196		
LIGHTFASTNESS	6	
AS 2001.4.21		
FIRE RATINGS	Ignitability	0
AS/NZS 1530.3	Spread of Flame	0
	Heat Evolved	0
	Smoke Developed	4
AS/NZS 3837	BCA Group	2
	Av. Specific Exinction Area	122.5 m ² /kg
IMO Resolution A.625(16)	Sections 8.2 + 8.3:	PASS
APPLICATION	upholstery, screen, wall panel	
ORIGIN	Made locally	
PLEASE NOTE	Results from performance tests are guidelines only	

ENVIRONMENT

- 96% rapidly renewable content. Wool is sourced from non-mulesed sheep
- Reduced water (6% savings) and energy consumption, non-potable water supply (100% rain and ground water), recycling of waste
- Manufacturer has a certified EMS (Enviro-Mark Diamond)
- CHUNKY is certified low VOC
- Wool absorbs indoor air contaminants, benefiting indoor air quality
- 96% biodegradable (natural fibre content) and recyclable

GREEN STAR

CHUNKY can contribute points to the following Green Star criteria:

- Stewardship Programs: CHUNKY can be reused or recycled through our Revive recycling program
- Low-VOC
- CHUNKY can be used on white furniture certified to Ecospecifier, AFRDI, ECNZ and GECA
- The Green Star Rating Tool states “Where at least 90% of an item’s mass is certified to a GBCA recognised standard, the item can be entered as a certified product at Level A, B or C.” Therefore any fabric can be used as fabrics are almost always under 10% by weight of a furniture item

LEED

CHUNKY can contribute points to the following LEED criteria:

- Bio-Based + Rapidly-Renewable Content (96%)
- Low-VOC
- Extended Producer Responsibility Recycling Program

WELL

CHUNKY can contribute to the following WELL criteria:

- Low VOC / VOC Reduction: CHUNKY is low VOC
- Toxic Material Reduction: CHUNKY is free of PFCs, flame retardants, phthalates and urea formaldehyde