

CALIBRE

—

A stunning highly-durable
wool-rich texture with
coloured highlights

INSTYLE

CALIBRE



CALIBRE Worth



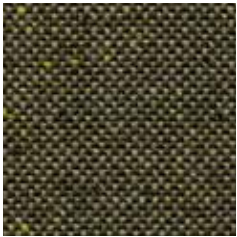
CALIBRE Class



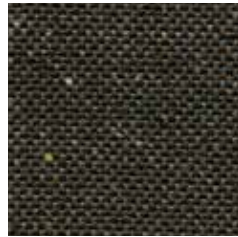
CALIBRE Distinction



CALIBRE Forte



CALIBRE Squire



CALIBRE Principle



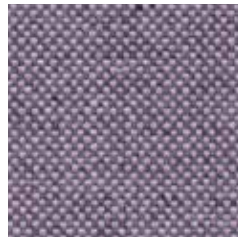
CALIBRE Esteem



CALIBRE Elite



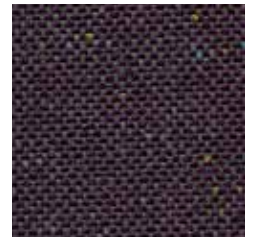
CALIBRE Aesthetic



CALIBRE Revere



CALIBRE Gentry



CALIBRE Grade



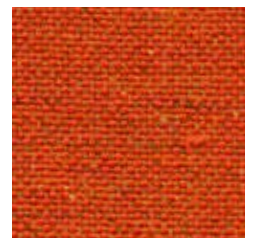
CALIBRE Quality



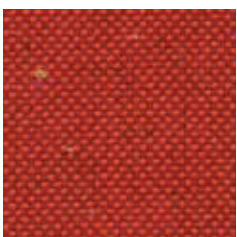
CALIBRE Character



CALIBRE Paramount



CALIBRE Talent



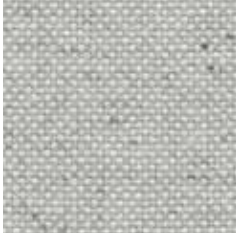
CALIBRE Ritz



CALIBRE Courage

Product may vary in colour due to the nature of the media
Please refer to website for current colour range

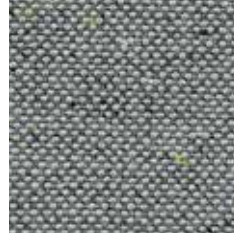
CALIBRE



CALIBRE Noble



CALIBRE Dandy



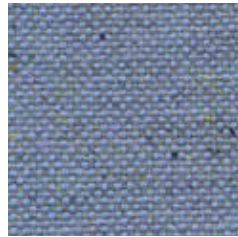
CALIBRE Integrity



CALIBRE Title



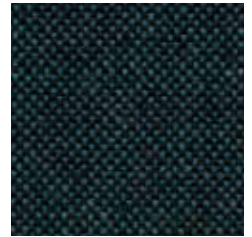
CALIBRE Aria



CALIBRE Luminary



CALIBRE Ultimate



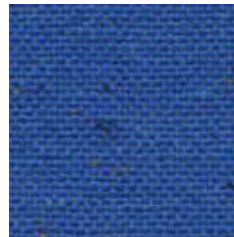
CALIBRE Status



CALIBRE Virtue



CALIBRE Valour



CALIBRE Keynote



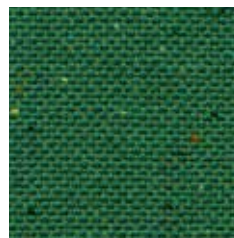
CALIBRE Icon



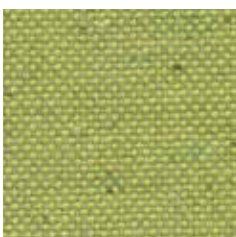
CALIBRE Opus



CALIBRE Literary



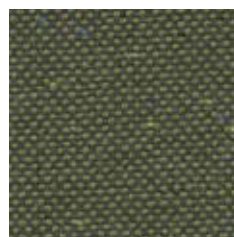
CALIBRE Fine



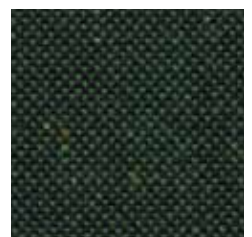
CALIBRE Wisdom



CALIBRE Merit



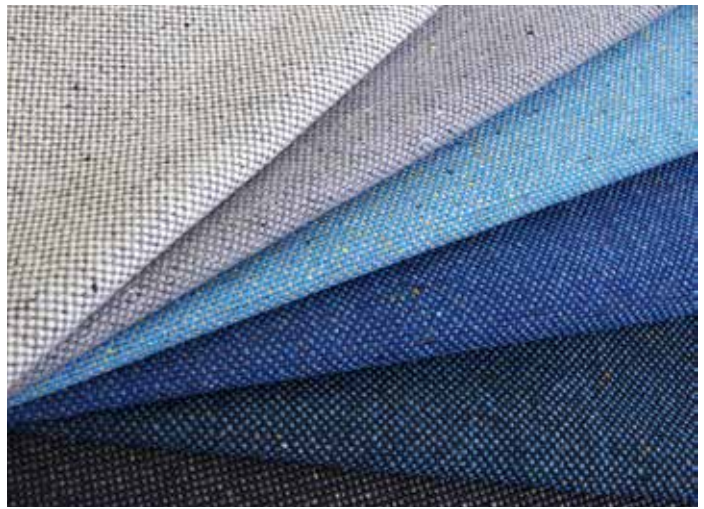
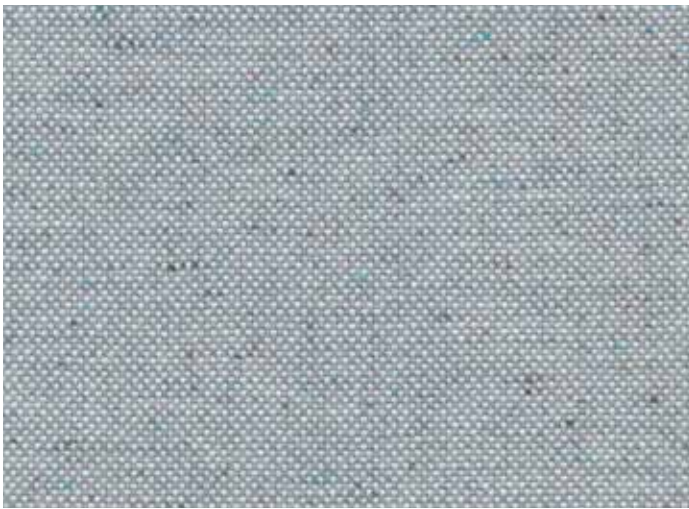
CALIBRE Business



CALIBRE Honours

Product may vary in colour due to the nature of the media
Please refer to website for current colour range

CALIBRE



COMPOSITION	82% Australian and New Zealand wool, 18% nylon
WIDTH / WEIGHT	137cm / 456gsm
PATTERN REPEAT	nil
ROLL SIZE	52m approx.
CARE CODE	CTA 1
ABRASION	
Martindale AS2001.2.25	>100,000
Wyzenbeek ASTM 4157	27,000 double rubs
CTA RATING	hc HEAVY DUTY COMMERCIAL USE
SEAM SLIPPAGE	Warp 5.4mm Weft 4.1mm
AS2001.2.22	Note: All seams must be overlocked or secured to prevent the premature failure of the seam due to fraying
PILLING	4
Martindale IWS196	
LIGHTFASTNESS	>5
ISO 105-B02	
FIRE RATINGS	Ignitability 0
AS/NZS 1530.3	Spread of Flame 0
	Heat Evolved 0
	Smoke Developed 4
AS/NZS 3837	BCA Group 2
	Av. Specific Extinction Area 45.5 m ² /kg
ISO 5660.1	NZBC Group 2-S
	Av. Specific Extinction Area 40.3m ² /kg
IMO Resolution A.625(16)	Sections 8.2 + 8.3: Pass
Additional Fire Tests	California 117E, ASTM E84
APPLICATION	upholstery, screens, wall panels
ORIGIN	Made locally
PLEASE NOTE	Results from performance tests are guidelines only

ENVIRONMENT

- 82% rapidly renewable content
- Manufactured to strict environmental criteria, reduced water (6% savings) and energy use, non-potable water supply (100% rain and ground water), recycling of waste
- Manufacturer has a certified EMS (Enviro-Mark Diamond)
- CALIBRE is certified low VOC
- Wool absorbs indoor air contaminants, benefiting indoor air quality
- 82% biodegradable (natural fibre content) and recyclable

GREEN STAR

CALIBRE can contribute points to the following Green Star criteria:

- Stewardship Programs: CALIBRE can be reused or recycled through our Revive recycling program
- Low-VOC
- CALIBRE can be used on white furniture certified to Ecospecifier, AFRDI, ECNZ and GECA
- The Green Star Rating Tool states “Where at least 90% of an item’s mass is certified to a GBCA recognised standard, the item can be entered as a certified product at Level A, B or C.” Therefore any fabric can be used as fabrics are almost always under 10% by weight of a furniture item

LEED

CALIBRE can contribute points to the following LEED criteria:

- Bio-Based + Rapidly-Renewable Content (82%)
- Low-VOC
- Extended Producer Responsibility Recycling Program

WELL

CALIBRE can contribute to the following WELL criteria:

- Low VOC / VOC Reduction: CALIBRE is low VOC
- Toxic Material Reduction: CALIBRE is free of PFCs, flame retardants, phthalates and urea formaldehyde