

# ALLOY

A contemporary radiating dot pattern with a sophisticated sheen.

INSTYLE

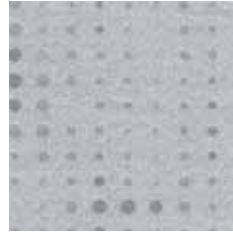
# ALLOY



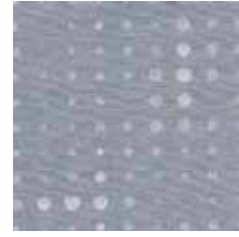
ALLOY Reflect



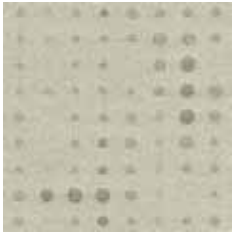
ALLOY Surface



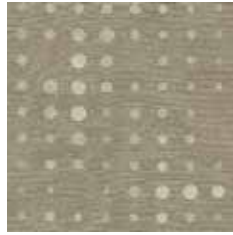
ALLOY Silver



ALLOY Wheels



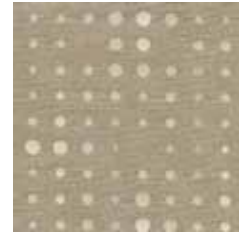
ALLOY Pewter



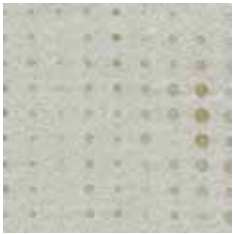
ALLOY Strength



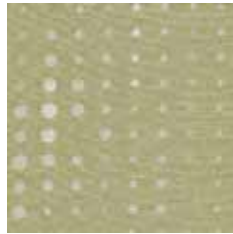
ALLOY Forge



ALLOY Blend



ALLOY Nickel



ALLOY Compound



ALLOY Luminous



ALLOY Mix



ALLOY Metallic



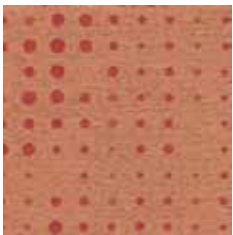
ALLOY Matrix



ALLOY Gleam



ALLOY Fusion



ALLOY Oxide



ALLOY Shine



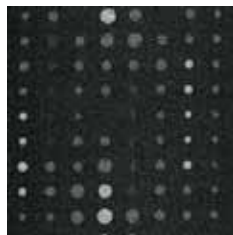
ALLOY Molten



ALLOY Bright



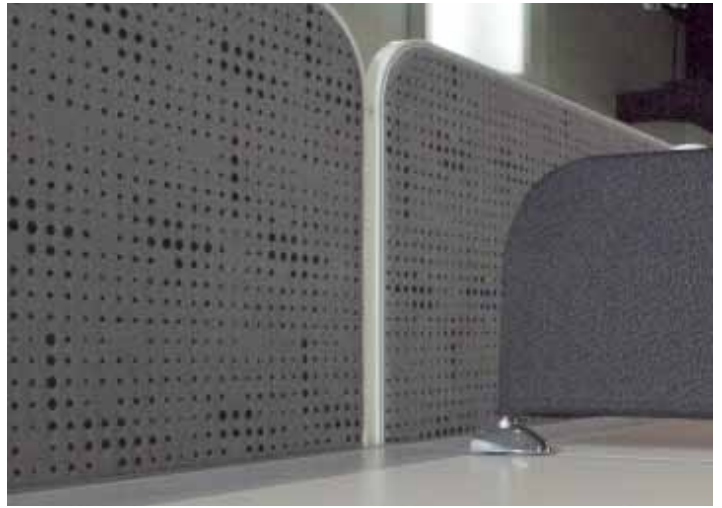
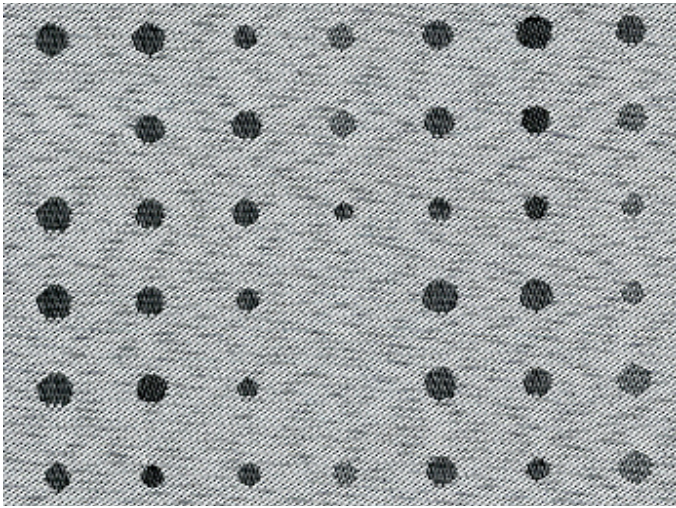
ALLOY Chrome



ALLOY Carbon

Patterns shown are not to scale  
Product may vary in colour due to the nature of the media  
Please refer to website for current colour range

# ALLOY



COMPOSITION	100% polyester	
WIDTH	186cm	
WEIGHT	239gsm	
PATTERN REPEAT	H 35.0cm V 28.5cm	
ROLL SIZE	50m approx.	
CARE CODE	Partition/Wall Panel: Screen Care Curtain/Bedsread: Polyester Healthcare Soft Furnishing: Polyester Soft Furnishings	
CTA RATING	 <b>COMMERCIAL SCREEN FABRICS</b>	
LIGHTFASTNESS AS 2001.4.21		6-7
FIRE RATINGS AS/NZS 1530.3	Ignitability	10
	Spread of Flame	0
	Heat Evolved	1
	Smoke Developed	5
AS/NZS 3837 (Cone Calorimeter)	BCA Group 1 Av. Specific Extinction Area 449.5 m2/kg	
APPLICATION	workstations, partitions, wall panels curtains, privacy screens, bedsreads Note: If curtaining is exposed to direct sunlight, ensure the curtains are protected with a suitable lining.	

## PERFORMANCE

- Easy to wash, quick drying with minimal shrinkage.
- Designed to withstand hospital and healthcare laundry and performance standards:
- AS/NZS 4146 Australian and New Zealand Standard for Laundry Practice.
- AS3789.9 Textiles for healthcare facilities and institutions: Curtains and patient bedscreens: fabric performance properties for colourfastness.
- AS2663.1 Textiles - fabrics for window furnishings: Uncoated fabrics - dimensional change.

## ENVIRONMENT

- 100% third-party certified polyester yarn: meets human ecological requirements according to Oeko-Tex Standard 100 Class I.
- Environmentally Improved Production Process: reduced water and energy consumption, reuse and recycling of waste.

## GREEN STAR

- ALLOY can be used on white furniture certified to Ecospecifier, AFRDI, GECA and ECNZ.
- The Green Star Rating Tool states "Where at least 90% of an item's mass is certified to a GBCA recognised standard, the item can be entered as a certified product at Level A, B or C." Therefore any fabric can be used as fabrics are almost always under 10% by weight of a furniture item.