

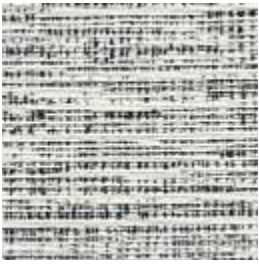
ACTIVE

A refined and versatile two-tone texture from the Kinetic collection.



INSTYLE

ACTIVE



ACTIVE Force



ACTIVE Group



ACTIVE Service



ACTIVE Remedy



ACTIVE Duty



ACTIVE Wear



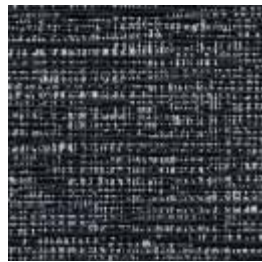
ACTIVE Ity



ACTIVE Part



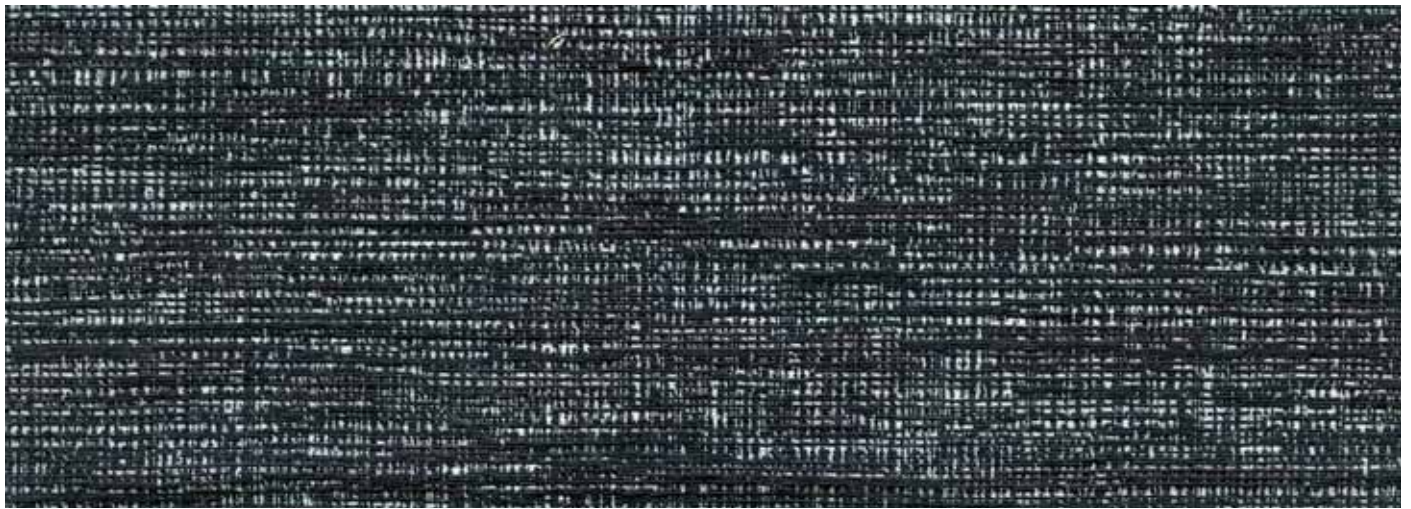
ACTIVE Over




ACTIVE Agent

Patterns shown are not to scale
Product may vary in colour due to the nature of the media
Please refer to website for current colour range

ACTIVE



COMPOSITION	35% nylon, 26% cotton, 26% viscose, 13% post-consumer recycled polyester
WIDTH / WEIGHT	137cm / 295gsm
PATTERN REPEAT	H 22.9cm V 19.7cm
ROLL SIZE	55m approx.
CARE CODE	CTA 1
ABRASION	
Martindale AS2001.2.25	>50,000
Wyzenbeek ASTM 4157	100,000 double rubs
CTA RATING	 HEAVY DUTY COMMERCIAL USE
SEAM SLIPPAGE	Warp 2.2mm Weft 2.8mm
AS2001.2.22	Note: All seams must be overlapped or secured to prevent the premature failure of the seam due to fraying
PILLING	5
Martindale IWS196	
LIGHTFASTNESS	6
ISO 105 B02	
FIRE RATINGS	Ignitability 11
AS/NZS 1530.3	Spread of Flame 0 Heat Evolved 2 Smoke Developed 4
AS/NZS 3837	BCA Group 2
(Cone Calorimeter)	Av. Specific Extinction Area 85.1 m ² /kg
USE	upholstery, screens, wall panelling

ENVIRONMENT

- 26% rapidly renewable content (cotton).
- 13% post consumer recycled content (polyester).
- Environmentally Improved Production Process: reduced energy consumption, reuse and recycling of waste and use of environmentally optimised dyes.
- Cotton absorbs prevalent indoor air contaminants therefore benefiting indoor air quality.
- Reusable and 26% biodegradable (natural fibre content).

GREEN STAR + LEED

- ACTIVE can be used on white furniture certified to Ecospecifier, AFRDI, GECA and ECNZ.
- The Green Star Rating Tool states “Where at least 90% of an item’s mass is certified to a GBCA recognised standard, the item can be entered as a certified product at Level A, B or C.” Therefore any fabric can be used as fabrics are almost always under 10% by weight of a furniture item.
- 52% renewable content contributes to LEED MR Credit 6 Rapidly Renewable Materials.
- 13% post consumer content contributes to LEED MR Credit 4 Recycled Content.