

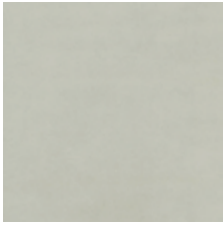
# VERONA

—  
A sophisticated leather with  
a beautiful lustre that is  
enhanced with age



INSTYLE

# VERONA



VERONA Glint



VERONA Cirrus



VERONA Ashen



VERONA Ravel



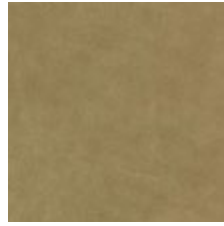
VERONA Blackbutt



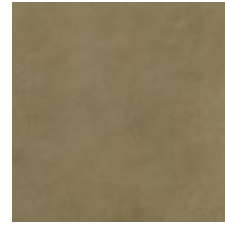
VERONA Porcelain



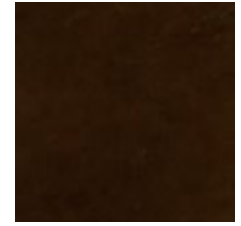
VERONA Pebble



VERONA Moss



VERONA Spinifex



VERONA Bronze



VERONA Tarragon



VERONA Wasabi



VERONA Lawn



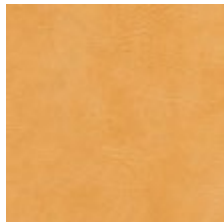
VERONA Greenstone



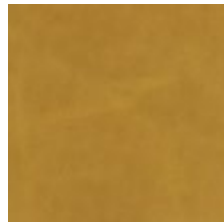
VERONA Mimosa



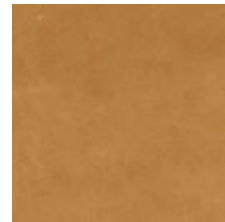
VERONA Doe



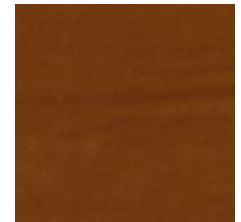
VERONA Butterscotch



VERONA Nectar



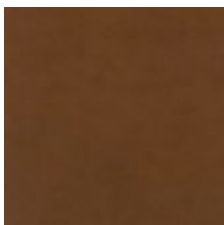
VERONA Walnut



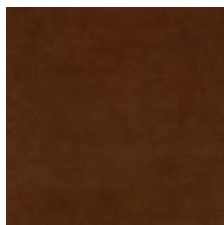
VERONA Nutmeg



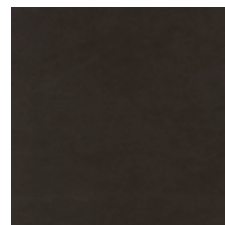
VERONA Chestnut



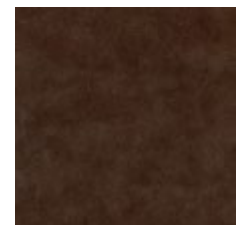
VERONA Gaia



VERONA Sepia



VERONA Toast



VERONA Aniseed

Leather may vary in colour due to the nature of the media  
Please refer to website for current colour range

# VERONA



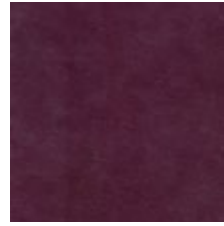
VERONA Saffron



VERONA Rosewood



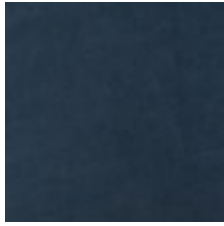
VERONA Elderberry



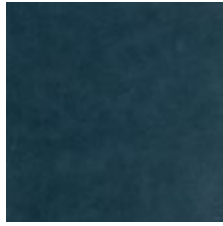
VERONA Juniper



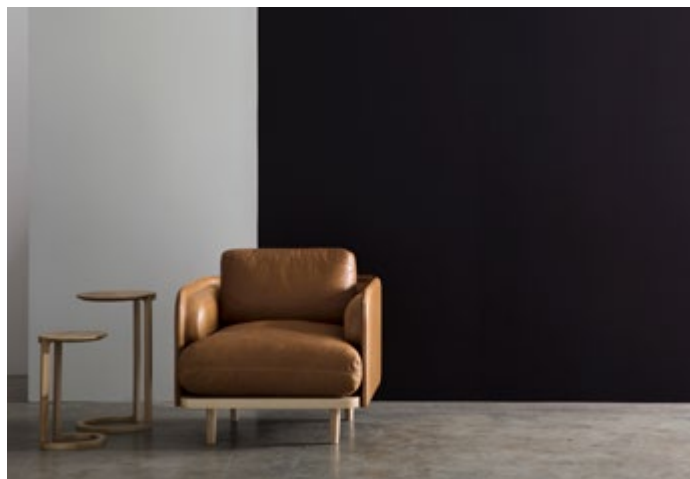
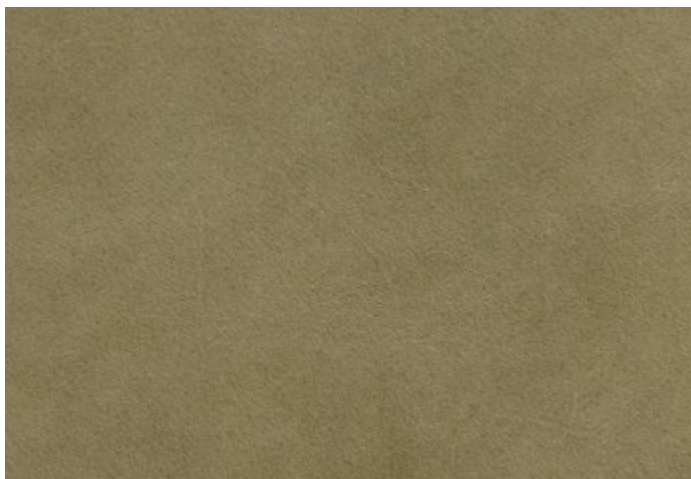
VERONA Lagoon




VERONA Pura



VERONA Adriatic



AVERAGE HIDE SIZE	5.5sqm
THICKNESS	1 - 1.2mm
WEIGHT	735gsm approx.
LEATHER TYPE	Pure Aniline 
COLOURFASTNESS TO-AND-FRO RUBBING EN ISO 11640 + 11641	Dry 5 Wet 4-5 Perspiration 5
LIGHTFASTNESS EN ISO 105-B02	3
pH AND ΔpH EN ISO 4045	pH 3.8 ΔpH 0.41
TEAR STRENGTH EN ISO 3377-1	32 N
FIRE RATINGS AS/NZS 1530.3	Ignitability 14 Spread of Flame 0 Heat Evolved 1 Smoke Developed 3
AS/NZS 3837	BCA Group 1 Av. Specific Extinction Area 129 m2/kg
IMO Resolution A.652(16)	Sections 8.2 + 8.3: Pass
APPLICATION	upholstery, wall panels + curtains for commercial, residential and hospitality applications
PLEASE NOTE	Pure-Aniline leathers are made from the finest raw hides. The natural characteristics such as insect bites, fat wrinkles, growth marks and healed scars can still be visible, a sign of a superior natural leather with its own individuality. Pure-Aniline leathers do not have any protective coating or pigment on the surface and are therefore more susceptible to fading from sunlight exposure. Care should be taken in high-traffic areas where food and drink spillages could stain the leather.

**CARE**

- Leather Care for Aniline Leathers is available from our website

**ENVIRONMENT**

- Leather is an agricultural by-product
- Water and energy reuse + recycling, renewable energy use (30%), non-potable water use (100%), no hazardous substances are used. Finishing is carried out using exclusively water-based conditioning systems
- Certified as low-VOC
- Reusable

**GREEN STAR**

- VERONA can contribute low VOC points
- VERONA can be used on white furniture certified to Ecospecifier, AFRDI, ECNZ and GECA
- The Green Star Rating Tool states “Where at least 90% of an item’s mass is certified to a GBCA recognised standard, the item can be entered as a certified product at Level A, B or C.” Therefore any leather can be used as leathers are almost always under 10% by weight of a furniture item

**LEED**

- VERONA can contribute low VOC points

**WELL**

- VERONA can contribute Low VOC / VOC Reduction
- Toxic Material Reduction: VERONA is free of PFCs, flame retardants, phthalates and urea formaldehyde

**SEATING COMFORT RATING**



A rating to determine a leather’s seating comfort based upon the leather’s ability to breathe and absorb moisture. Tested to ASTM E 96 M-05. VERONA achieves an Excellent Seating Comfort rating.