

SOURCE

—
A classic and versatile
LIFE Textiles® texture with
high durability



INSTYLE

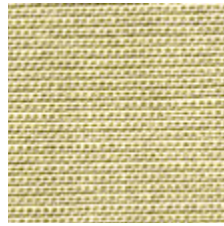
SOURCE



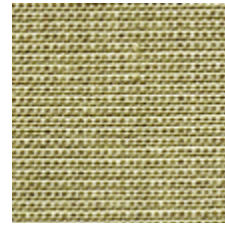
SOURCE Comfort



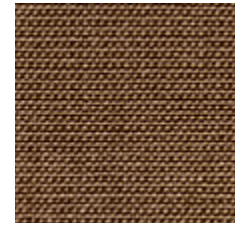
SOURCE Natural



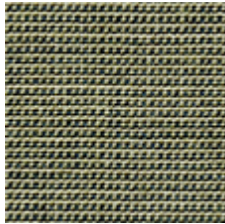
SOURCE Light



SOURCE Air



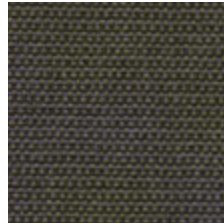
SOURCE Fibre



SOURCE Pure



SOURCE Energy



SOURCE Answers



SOURCE Create



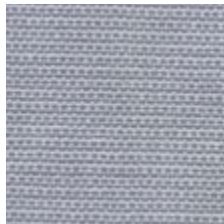
SOURCE Nourish



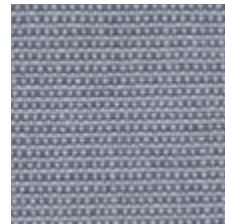
SOURCE Local



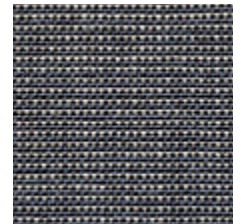
SOURCE Pride



SOURCE Truth



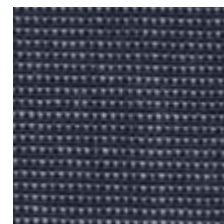
SOURCE Unit



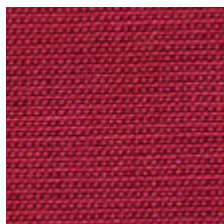
SOURCE Hidden



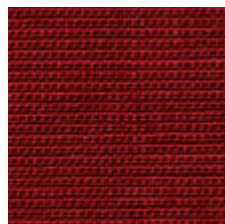
SOURCE Peace



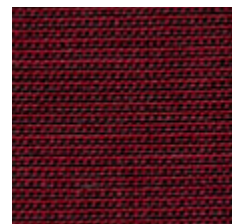
SOURCE Beauty



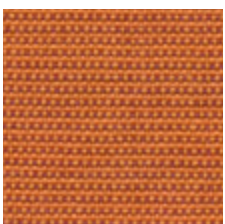
SOURCE Cee



SOURCE Tomato



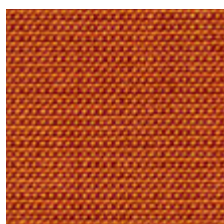
SOURCE Idea



SOURCE Frequency



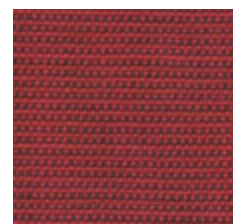
SOURCE Amusement



SOURCE Vitality



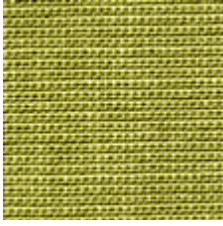
SOURCE Solar



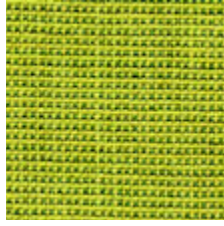
SOURCE Major

Product may vary in colour due to the nature of the media
Please refer to website for current colour range

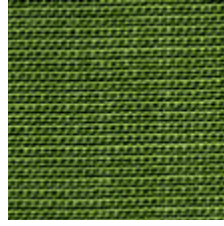
SOURCE



SOURCE Seed



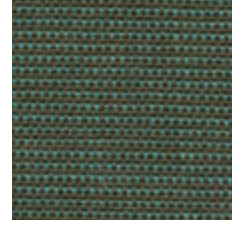
SOURCE Erer



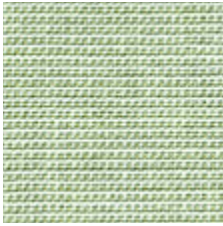
SOURCE Joy



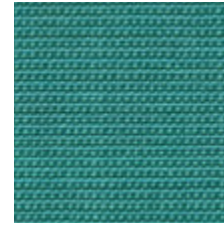
SOURCE Of Course



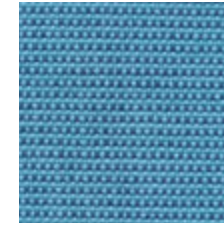
SOURCE Essence



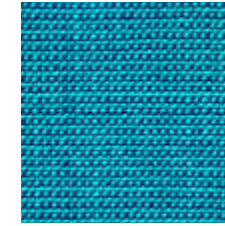
SOURCE Spring



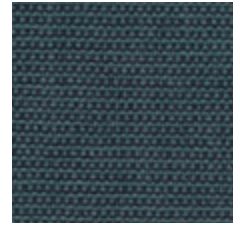
SOURCE Brilliance



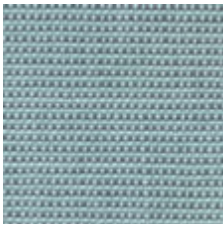
SOURCE Clarity



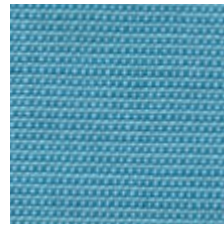
SOURCE Wonder



SOURCE Knowledge



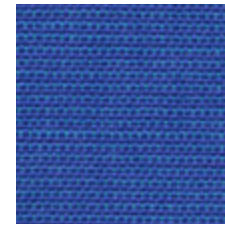
SOURCE Haven



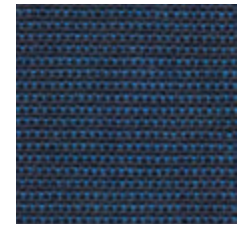
SOURCE Relaxation



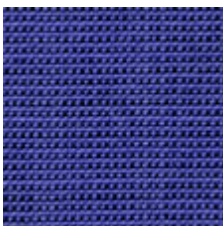
SOURCE Sanctuary



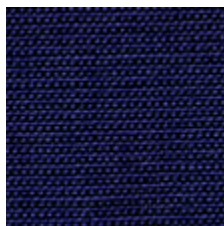
SOURCE Global



SOURCE Fulfilment



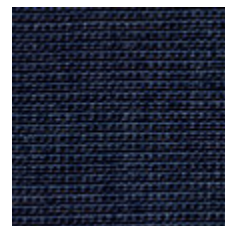
SOURCE Strength



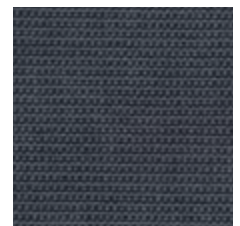
SOURCE Water



SOURCE Rain



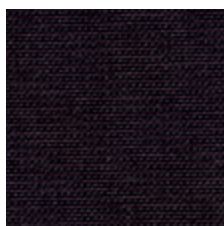
SOURCE Well



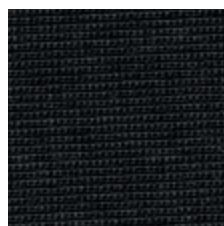
SOURCE Details



SOURCE Innovation



SOURCE Discovery



SOURCE Origin

Product may vary in colour due to the nature of the media
Please refer to website for current colour range



COMPOSITION	100% Australian worsted EthEco® wool
WIDTH / WEIGHT	188cm / 320gsm
PATTERN REPEAT	nil
ROLL SIZE	50m approx.
CARE CODE	Upholstery: CTA 1 Screen: ICT Screens
ABRASION	
Wyzenbeek ASTM 4157	150,000 double rubs
Martindale AS2001.2.25	44,500
CTA RATING	hc HEAVY DUTY COMMERCIAL USE
SEAM SLIPPAGE	Warp 3.5mm Weft 5.7mm
AS2001.2.22	Note: All seams must be overlapped or secured to prevent the premature failure of the seam due to fraying
PILLING	5
Martindale IWS196	
LIGHTFASTNESS	5
AS 2001.4.21	
FIRE RATINGS	Ignitability 10
AS/NZS 1530.3	Spread of Flame 0
	Heat Evolved 0
	Smoke Developed 4
AS/NZS 3837	BCA Group 1
	Av. Specific Extinction Area 75.5m ² /kg
Additional Fire Tests	California 117E, ASTM E84
APPLICATION	upholstery, screens, wall panels
ORIGIN	Made in Australia
PLEASE NOTE	Results from performance tests are guidelines only

ENVIRONMENT

- 100% sustainable, rapidly renewable content: EthEco® wool is sourced from non-mulesed sheep cared for on holistically-managed farms
- Environmentally Improved Production Process: Manufactured to strict environmental criteria, reduced water and energy use, reuse of water (30%), recycling of waste, no hazardous substances
- Wool absorbs indoor air contaminants, benefiting indoor air quality
- SOURCE is certified as low-VOC
- 100% biodegradable and recyclable

GREEN STAR

SOURCE can contribute points to the following Green Star criteria:

- Stewardship Programs: SOURCE can be reused or recycled through our Revive recycling program
- Low-VOC
- SOURCE can be used on white furniture certified to Ecospecifier, AFRDI, ECNZ and GECA
- The Green Star Rating Tool states "Where at least 90% of an item's mass is certified to a GBCA recognised standard, the item can be entered as a certified product at Level A, B or C." Therefore any fabric can be used as fabrics are almost always under 10% by weight of a furniture item

LEED

SOURCE can contribute points to the following LEED criteria:

- Bio-Based + Rapidly-Renewable Content (100%)
- Low-VOC
- Extended Producer Responsibility Recycling Program

WELL

SOURCE can contribute to the following WELL criteria:

- Low VOC / VOC Reduction: SOURCE is low VOC
- Toxic Material Reduction: SOURCE is free of PFCs, flame retardants, phthalates and urea formaldehyde